



# Susan's Bay fire Registration and Assessment findings

27 March 2021

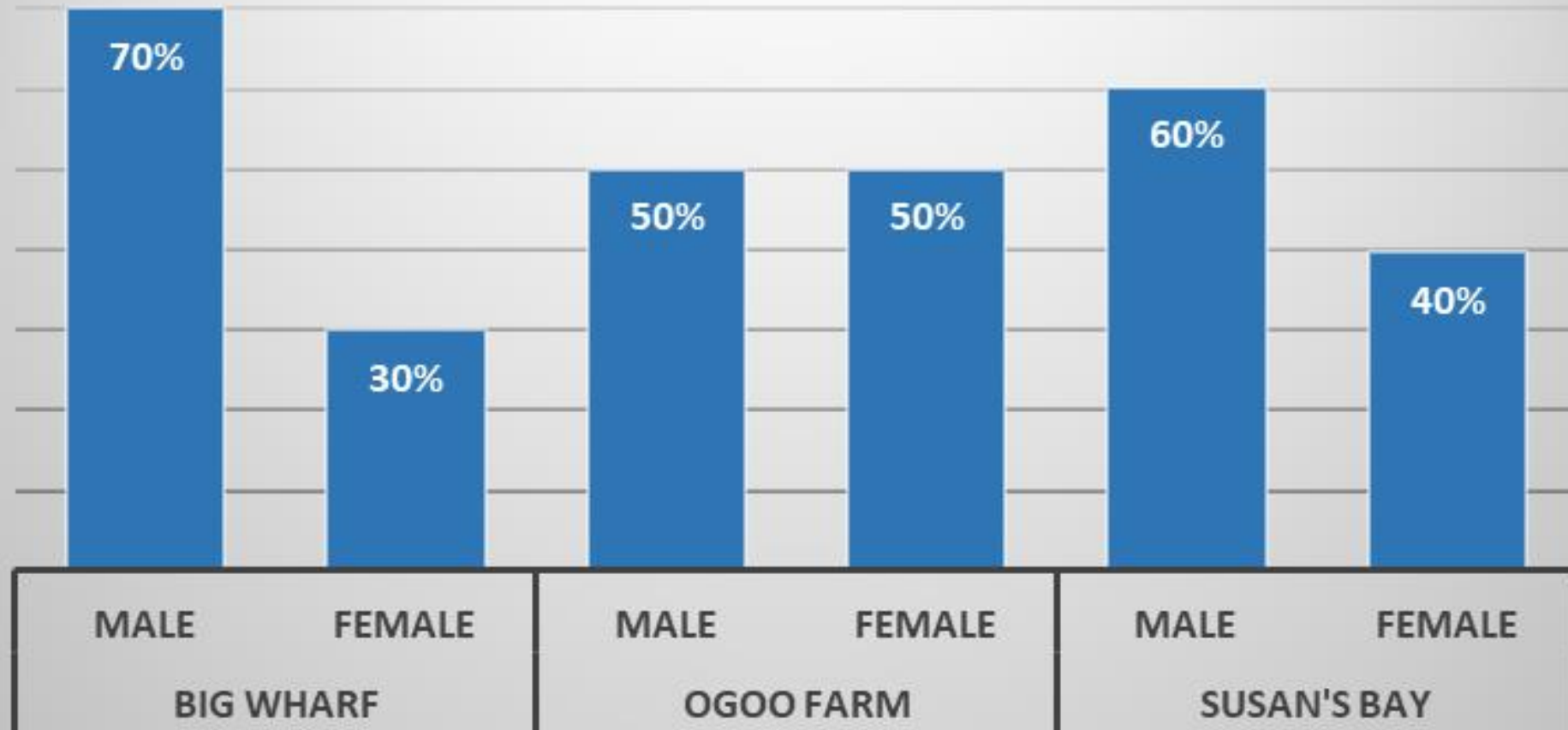
# Number of affected



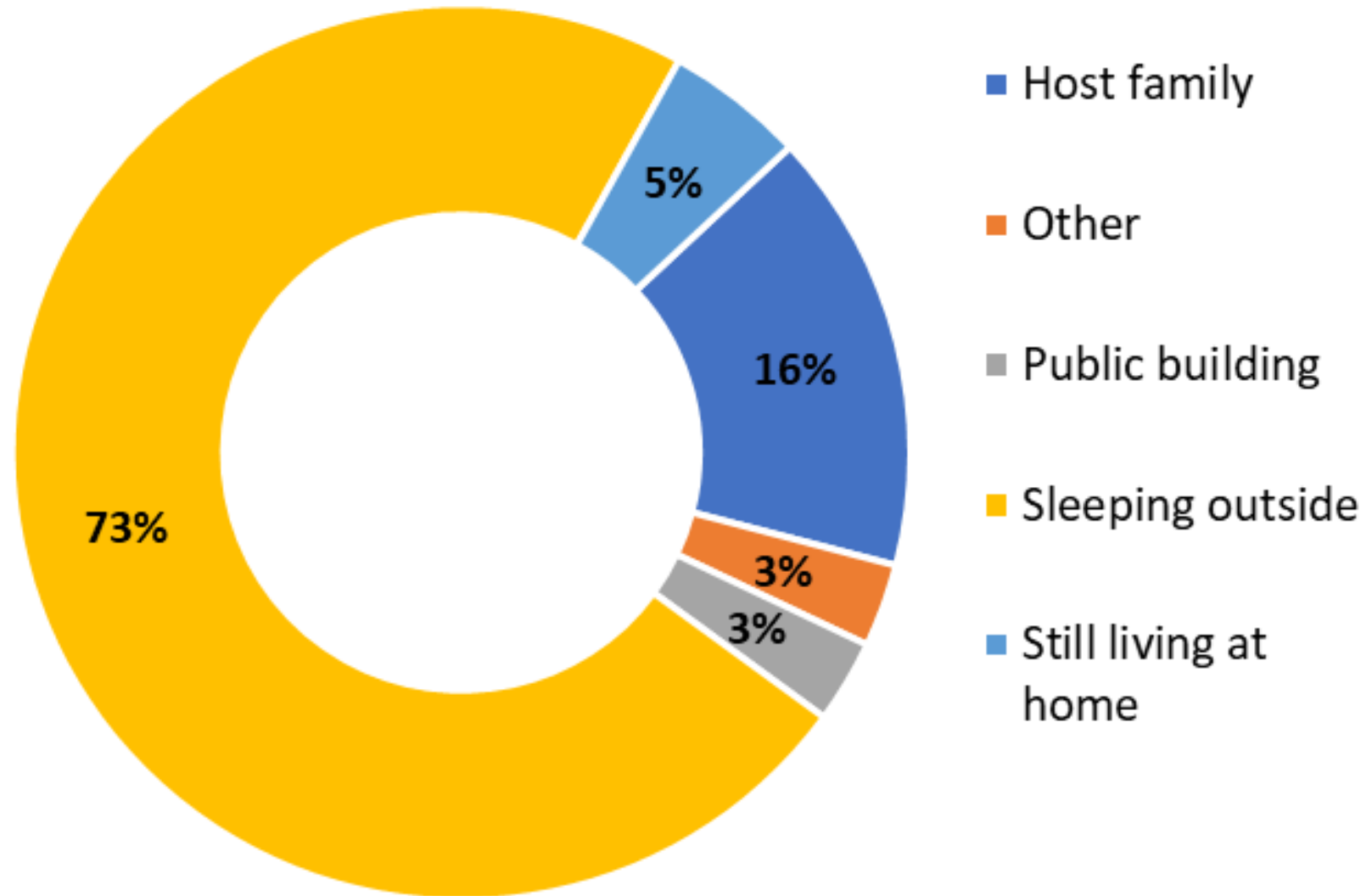
7,093 people in  
1,597 households

Injured 409  
(men=207, women=181,  
children=21)

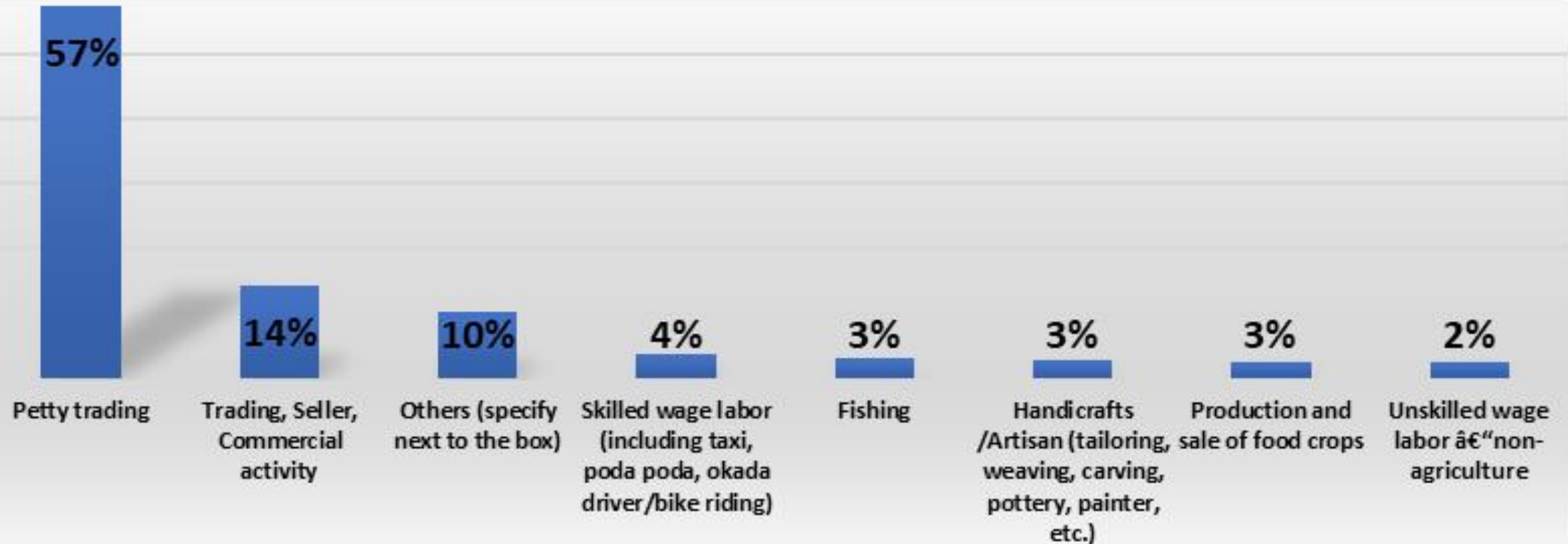
## Sex of the registrant



## Current place of residence

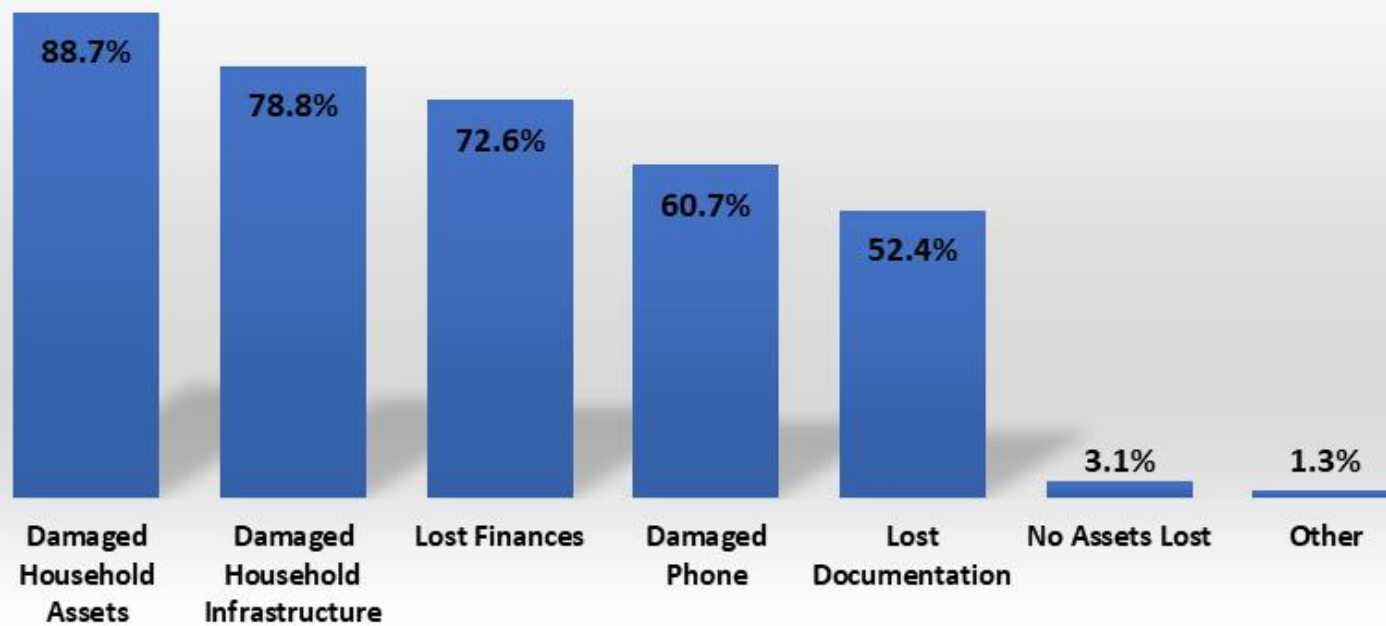


## Main livelihood activities





**Damaged caused by the fire**



<b>Number of people affected</b>	<b>7,093</b>
<b>People living with disabilities</b>	<b>140</b>
<b>Pregnant and lactating mothers</b>	<b>497</b>
<b>0-1 yearAge Group</b>	<b>332</b>
<b>1-3 years Age Group</b>	<b>638</b>
<b>3-18 years Age Group</b>	<b>2,382</b>
<b>18 - 65 years Age Group</b>	<b>3,327</b>
<b>Over 65 years Age Group</b>	<b>76</b>