



STATISTICS SIERRA LEONE
(Stats SL)

Credible Data for National Development



Preliminary Report of the Final Results of the *first digital census* in Sierra Leone

**2021 Mid-Term Population and
Housing Census**

**September
2022**



Chinese Embassy
in Sierra Leone



NATIONAL
STATISTICAL
OFFICE



TABLE OF CONTENTS

LIST OF TABLES.....	iii
LIST OF FIGURES	iv
LIST OF APPENDIXES.....	v
ACKNOWLEDGEMENTS.....	vi
PREFACE	ix
ABOUT THE 2021 MID-TERM POPULATION AND HOUSING CENSUS	1
PART A - DIGITAL CARTOGRAPHIC MAPPING EXERCISE.....	5
METHODOLOGY	6
ENUMERATION AREA (EA) MAP	8
BUILDING FRAME	9
STRUCTURES BY DISTRICT.....	10
PART B - THE DIGITAL MAIN ENUMERATION.....	11
2021 MTPHC HOUSEHOLD POPULATION AND AVERAGE HOUSEHOLD SIZE	12
INTER-CENSAL PERCENTAGE CHANGE (2015 TO 2021)	14
SPATIAL DISTRIBUTION OF THE POPULATION	17
POPULATION DENSITY	19
SEX DISTRIBUTION BY DISTRICTS.....	20
APPENDIX	23

LIST OF TABLES

Table 1: Field Data collection Plan.....	4
Table 2: Structures By District.....	10
Table 3: 2021 MTPHC Household Population and Average Household Size.....	13
Table 4: Population Change, Sierra Leone 1963 to 2021.....	15

LIST OF FIGURES

Figure 2:	Cartographic Output	6
Figure 3:	Cartographic Methodology	7
Figure 4:	National Enumeration Area Map.....	8
Figure 5:	Cartographic Building Frame Map.....	9
Figure 6:	Sierra Leone 2021 Population by Sex	11
Figure 7:	Population Size of Sierra Leone (1963 to 2021) in Millions	12
Figure 8:	Average Annual Inter-Censal Growth Rates.....	13
Figure 9:	Average Annual Growth Rates from 1963	14
Figure 10:	Inter-censal Percentage Change by Regions, Sierra Leone 2015 to 2021....	16
Figure 11:	Inter-censal Percentage Change by District, Sierra Leone 2015 to 2021	16
Figure 12:	Population Share by Region, Sierra Leone 2021	17
Figure 13:	Percentage Share of the Population by District, Sierra Leone 2021.....	18
Figure 14:	Population Share by District, Sierra Leone 2021	18
Figure 16:	Percent Excess or Deficit of Males by District, Sierra Leone 2021	20
Figure 17:	Map Of Sierra Leone Showing Administrative Districts	22

LIST OF APPENDIXES

Table A: Population Change (1963 To 2021), Sierra Leone	23
Table B: Population By Administrative Districts, Sierra Leone (1963 – 2015)	24
Table C: Population By Administrative Districts, Sierra Leone (2015 – 2021)	25
Table D: Population By Region And Local Councils, Sierra Leone (2015 – 2021)	26
Table E: Distribution Of Population By Chiefdom, Sex And Density, Sierra Leone (2015 – 2021)	28

ACKNOWLEDGEMENTS

We have come a long way in our bid to better the database of Stats SL in particular and the country in general. We, as an institution, are satisfied that we did a good job and achieved the objectives set.

Stats SL would like the public to value the significant contributions made by specific people and institutions to the overall success of the first ever-digital census conducted in this country – the 2021 Mid-Term Population and Housing Census.

Stats SL would like to thank His Excellency President Dr Julius Maada Bio for his visionary leadership and for the exceptional confidence reposed in the Council and Management of Stats SL as a whole, when he gave approval for his Government to take over financing the implementation of the census, after the World Bank decided to withdraw funding for the activity, a day to the deployment of trained field staff for the main enumeration exercise across the country!

We are grateful to the Hon Minister, Dr. Francis Kai-Kai and his team in the Ministry of Planning and Economic Development for the exceptional support provided to Stats SL during the period this census lasted. We had earlier on enjoyed the support of his predecessor Hon Minister Mrs Nabeela Farida Tunis current minister of Western Region, with whom Stats SL first presented the concept of the Mid-Term Census to the President.

The former Minister of Finance, now Chief Minister Hon. Jacob Jusu Saffa and the current Minister Hon. Denis K. Vandy and team duly deserve our recognition and thanks for making this national activity work.

Stats SL is equally thankful to Hon. Musa Fofanah, Chairman of the Parliamentary Subcommittee on Planning and Economic Development and his supportive Committee members who ensured that Stats SL remained accountable throughout the process.

Our gratitude and thanks also go to members of the Mid-Term Census committees – the Technical Committee, the Publicity Committee and the Advisory Committee for the diverse roles they played.

To our various field staff including supervisors, enumerators, IT and data quality teams: thank you, thank you, thank you. You have done a marvelous job for your country and we are sure you feel very proud that we can announce today the results of your hard work.

Chiefdom authorities across the country assisted Stats SL in reaching out to their people and urging them to accept our enumerators in their homes. Stats SL thanks all Paramount Chiefs, Section Chiefs and their teams. Traditional rulers and heads of ethnic groups contributed to the success of the national activity. Thank you.

Stats SL is also indebted to the National Action for Civic Education and Development (NaCCED) which reached out to the Chiefs, Heads of various ethnic groups, youth groups, and facilitated a workshop for Stats SL's engagement with the groups.

Similarly, Stats SL thanks the reputable Institute for Governance Reform (IGR) for facilitating a key stakeholder meeting between Stats SL and Civil Society Organisations (CSOs) on the Mid-Term Census.

We wish to thank the Security Forces who played a great role in ensuring that we conducted the census unhindered despite some unfortunate circumstances in some districts.

The Media played a fantastic role in sensitizing the public on the 2021 Mid-Term Census. Thank you; we are grateful.

Stats SL wishes to thank our Census Secretariat and all Stats SL staff for your various contributions to the success of the census.

Stats SL Council was in the forefront of the census process and played a vital role in achieving our goal. We thank them immensely for that.

Special thanks now go to our development partners.

Stats SL thanks The World Bank for financing a considerable part of the census activities.

Many thanks to UNICEF, UNFPA, UNECA and the UN Family for various contributions to the census process.

The MRU Secretariat and the Chinese Embassy also provided items that were used for the census. We are grateful to you.

Furthermore, we would like to thank our consultants from Nigeria, Ghana, Uganda, Ethiopia, Malawi and the UK, whose excellent services to Stats SL and Sierra Leone have made it possible for us to announce these final results of the first digital census in Sierra Leone after only a couple of months.

We would therefore like to end these acknowledgements by immensely thanking all our respondents who provided the required information to meet our desired objective.

Thank you and God bless us all.

Mr. Moses L. J. Williams
Chairman, Statistics Council

PREFACE

I feel very blessed as the Chief Census Officer to present the preliminary report of the first fully digital Population and Housing Census successfully conducted in Sierra Leone.

On the 31st of May 2022, we announced the provisional results of the Mid-Term Population and Housing Census in Sierra Leone, conducted in December 2021. Just a few months later, we completed the review of the data and provided the final results to the Government of Sierra Leone.

Stats SL is pleased to report that an intensive data review did not result in a significant change in the provisional results. There is a total of 7,061 individuals added to the provisional total reported. This confirms the robust processes we put in place and consequently the high quality data we have generated.

In my published statement during the announcement of the provisional results, I provided key reasons why we had to go to the field, stating the key objectives. I am pleased to report that Stats SL achieved the objectives of the 2021 Mid-Term Census. I had also explained the digital methodology used, starting from the cartographic mapping and ending with the main enumeration.

Sierra Leone can now be proud of having conducted its first digital census, like a few other African countries have done: Ghana, Kenya, Malawi and Botswana. It is good to see that Liberia, Nigeria, Tanzania, Rwanda and several others are now following us. We are a small country but we can also lead in Africa.

Stats SL will henceforth be able to provide population data at the Locality, Ward, Section, Chiefdom/Council, District and Regional levels and due to the digital methods used, these data can be generated in a timely manner.

Stats SL now also has a reliable sampling frame to support all important socio-economic surveys for local and national development planning purposes.

While announcing the provisional results, I stressed the importance of a de facto census in which we counted people where they slept on the Census Night of 9th

December 2021 whether or not those places were their usual places of residence. Therefore, the population we report is the census night population. I further explained that we required only one member of the household to respond to our questions on behalf of the entire household members.

The processes that led to the success of the digital 2021 Mid-Term Census included a locality verification exercise; a digital cartographic mapping; a digital pilot census; and the main digital enumeration exercise. We were on top of all technical issues.

I wish to stress that the training for the main enumeration was done at district level, where recruitment of census staff was also carried out. This was in response to local authorities who wished to have their ‘sons and daughters’ work in their local areas. We are therefore delighted that these young men and women demonstrated exceptional willingness to enumerate their own people.

In this preliminary report, we present some of the final results of the 2021 Mid-Term Population and Housing Census. We will do full analysis and comprehensive/thematic reports in due course.

Prof. Osman Sankoh, DSc., COR
Chief Census Officer
Statistician General & CEO
Vice Chair of the United Nations Statistical Commission

ABOUT THE 2021 MID-TERM POPULATION AND HOUSING CENSUS

The Government of Sierra Leone, through Statistics Sierra Leone (Stats SL), conducted the first ever-digital Mid-term Population and Housing Census in 2021. The purpose of the Mid-term Population and Housing Census (MTPHC) is to produce updated information on population and housing, disaggregated at all administrative and locality levels in Sierra Leone.

A Pilot Census, which took place in October 2021, was to ‘test all the census field and office operations, manuals and CAPI procedures. It also covered all the post-enumeration activities, such as the collection and checking of enumeration materials, the ICT infrastructure and the entire data processing system’.

The Pilot Census was conducted in 178 Enumeration Areas (EAs), equivalent to 1% of the finalized EAs. The EAs were purposively selected to reflect the domains of interest namely Locality Types 1, 2 & 3; High density/highly urbanized areas; Islands/areas with large water bodies; Border areas; Mountainous areas and areas with nomadic population.

Generally, the pilot was a huge success, worth undertaking, and informed our plan for the main enumeration.

The methodology deployed in the MTPHC field plan is described under two broad headings:

Staff selection, Training and Deployment –

1. Staff Selection

The main census required various categories of field staff. These included National Supervisors/Monitors, five (5) Regional Coordinators, five (5) Regional CAPI Facilitators, 16 District Census Coordinators, District Publicity Officers, Data quality management team set up at every district, Supervisors and Enumerators.

2. Training of Field Staff

All field staff involved in the Census underwent structured training on census instruments and procedures as well as their roles and responsibilities during enumeration. The training was done at district levels and all trainees split into different classes trained by the CAPI and PAPI experts. During the training, there were strict observance of the Standard Operating Procedures (SOPs) for COVID-19 pandemic.

In addition, other duty bearers performed specific functions ensuring proper training class management. Their respective roles are outlined below:

- a) **Class Administrator** - Responsible for ensuring that the training sessions for the assigned class progress as per the timetable. He/she is not required to be a trainer but plays the administrative role of ensuring harmony within the training class.
- b) **Class Head** - Official link person between the learners and the management of the training. He/she worked closely with the training Manager and the technical team.
- c) **Logistical Assistant** - Ensure that all the necessary logistics for training in a particular class are available as and when required. Should be in the class all the time.
- d) **Class Rapporteur** - Takes record of the proceedings in the class especially unresolved issues and contentious issues during the training. He/she was expected to produce a training report at the end of the training. Indeed, the DCCs provided report for each class after the training.

2a. Mode of Training of Census field staff

The training of field staff utilized a combination of three approaches namely:

- i) **Formal classroom lectures/presentations** - Learners trained on census data collection procedures as stipulated in the Instructions Manual;

ii) Role Plays/Mock Interviews

- iii) Field practice** - Learners visited purposely-selected households and collected information about the household members, similar to what collected in the main enumeration. This serves to provide the trainers with an assessment of the level of comprehension of the census tools and procedures.

2b. Assignment of Training Roles for the different Census training classes

Allocation of roles to the different individuals so that:

- i. There was fairness/equity in allocation of the workload to the trainers;
- ii. Trainers were not overworked i.e. Trainers do not train for too long continuously to the point of getting bored;
- iii. No class was dominated by a single trainer;

2c. Census Training Monitors

There were Independent Monitors for the training. These were from the following institutions.

- i. Senior staff of Stats SL
- ii. Census Technical Committee
- iii. Statistics Council
- iv. Ministry responsible for Statistics (MOPED)
- v. Development partners (World Bank, UNICEF, UNFPA, ECA etc)

Stats SL organized a briefing session (and associated documentation) for the Independent Monitors prior to their visit to the training centres.

2d. Field Data collection Plan

The plan for the field data collection was based on total number of Enumeration Areas (EAs) and Supervisory Areas (SAs). As seen in the table below there were a total number of 23,736 EAs with 4, 127 SAs. These were categorized into City and district EAs, which led to the recruitment of a total number of 14, 264 enumerators and supervisors. The table below gives a clear field data collection plan.

Table 1: Field Data collection Plan

District	Enumeration Areas	Number of Supervisory Areas	City and District Headquarter Town	Supervisor, District Headquarter Town	Rural Supervisory Areas	Supervisors	TOT Supervisors	TOT Enumerators	Supervisors and Enumerators
BO	1840	278	76	38	202	202	240	819	1059
BOMBALI	1350	283	78	39	205	205	244	612	856
BONTHE	844	152	6	3	146	146	149	353	502
FALABA	545	116	9	5	107	107	112	255	367
KAILAHUN	1839	276	60	30	216	216	246	767	1013
KAMBIA	900	141	40	20	101	101	121	507	628
KARENE	592	138	23	12	115	115	127	346	473
KENEMA	2840	408	121	61	287	287	348	1135	1483
KOINADUGU	569	95	23	12	72	72	84	276	360
KONO	1373	257	76	38	181	181	219	685	904
MOYAMBA	1320	260	23	12	237	237	249	528	777
PORT LOKO	1667	258	23	12	235	235	247	857	1104
PUJEHUN	1526	284	39	20	245	245	265	724	989
TONKOLILI	1425	288	40	20	248	248	268	758	1026
WESTERN RURAL	2179	398	184	92	214	214	306	948	1254
WESTERN URBAN	2927	495	495	248	0	0	248	1225	1473
TOTAL	23736	4127	1316	658	2811	2811	3469	10795	14264

PART A - DIGITAL CARTOGRAPHIC MAPPING EXERCISE

- **GOAL:** To prepare and produce Enumeration Area (EA) maps of Sierra Leone for Censuses and Surveys.
- **KEY OBJECTIVES**
 - To update base maps and delineated EAs;
 - To produce census field maps;
 - To produce geographic frame for control of the main enumeration; and
 - To construct an efficient frame for other statistical sample enquiries.

Figure 1 below shows the main menu highlights of the Enumeration Area demarcation Pad (EAPaD) application that was used for the Cartographic Mapping. This pad was customized to Sierra Leone situation and used the recent satellite imagery procured from Milsat Technologies with a very good resolution of 30 cm in both built up and less built up areas. The Imagery will clearly show all buildings, roads, rivers, cars etc. to aid the mapping by the cartographic field staff.

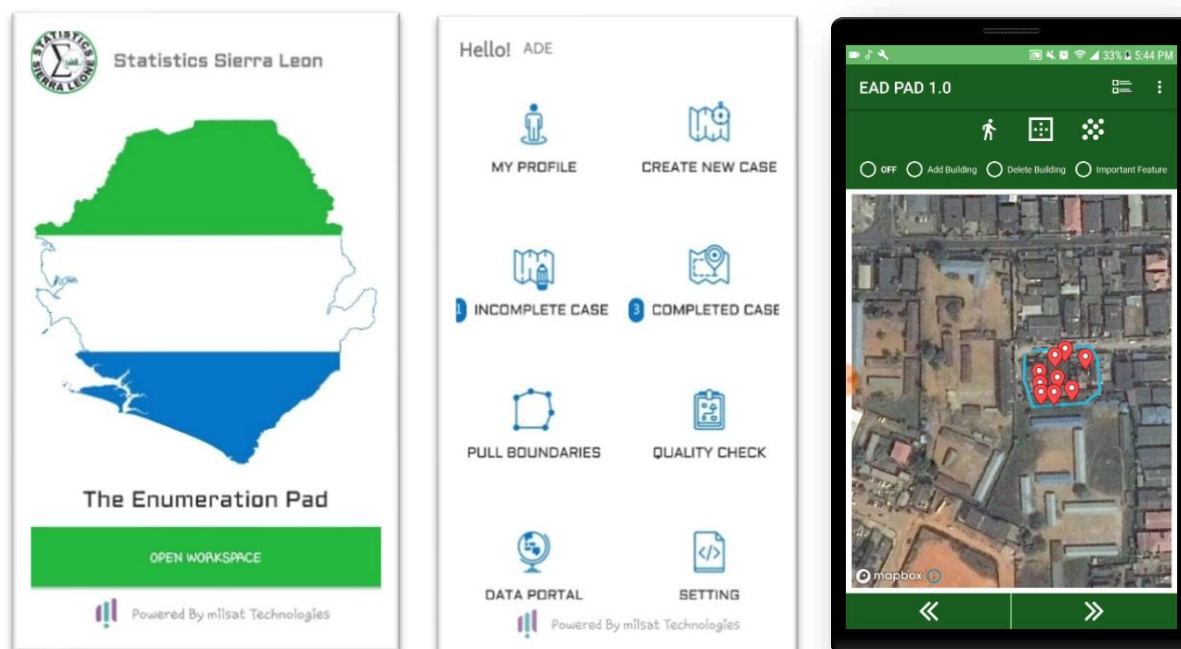


Figure 1: Cartographic Application Interface

1 OFFICE	1 OFFICE (NAME OF OFFICE)	1 TRADITIONAL HUTS	1 PRIMARY
2 SHOP	2 SHOP (GET THE NAME)	2 BUNGALOWS/SINGLE STOREY BUILDING	2 SUB-PRIMARY
3 ENTERTAINMENT CENTER	3 ENTERTAINMENT CENTER (GET THE NAME)	3 1-STOREY BUILDING	
4 EDUCATIONAL INSTITUTION	4 EDUCATIONAL INSTITUTION (GET THE NAME)	4 2-STOREY BUILDING	ROADS
5 BANK	5 BANK (GET THE NAME)	5 3-STOREY BUILDING	1 EXPRESSWAY
6 HEALTH INSTITUTION	6 HEALTH INSTITUTION (GET THE NAME)	6 MORE THAN 3 STOREY BUILDING	2 MAJOR
7 DRUG STORE/PHARMACY	7 DRUG STORE/PHARMACY (GET THE NAME)	7 OTHERS	3 MINOR
8 CHURCH	8 CHURCH (GET THE NAME)		4 FOOTPATH
9 MOSQUE	9 MOSQUE (GET THE NAME)		
10 TRADITIONAL PLACE OF WORSHIP	10 TRADITIONAL PLACE OF WORSHIP (GET THE NAME)	BUILDING STATUS	
11 MARKET	11 MARKET (GET THE NAME)	1 RESIDENTIAL	WATERBODIES
12 POLICE STATION	12 POLICE STATION (GET THE NAME)	2 NON RESIDENTIAL	1 OCEANS
13 POLICE BARRACK	13 POLICE BARRACK (GET THE NAME)	3 INSTITUTIONAL	2 RIVERS
14 MILITARY BARRACK	14 MILITARY BARRACK (GET THE NAME)		3 LAKES
15 MOTOR-PARK	15 MOTOR-PARK (GET THE NAME)	BUILDING OWNERSHIP	4 DAMS
16 INDUSTRY/FACTORY	16 INDUSTRY/FACTORY (GET THE NAME)	1 PRIVATELY OWNED	
17 WATER RESOURCES	17 WATER RESOURCES (GET THE NAME)	2 GOVERNMENT OWNED	DRAINAGE
18 DWELLINGS(PRIVATE\PUBLIC HOUSE)	18 DWELLINGS(PRIVATE\PUBLIC HOUSE)	3 PRIVATE AGENCY/GROUP	1 RIVER
19 HOTEL/MOTEL	19 HOTEL/MOTEL (GET THE NAME)		2 CANALS
20 FUEL STATIONS	20 TELECOMMUNICATION (GET THE NAME)	EA STRUCTURE	3 STREAMS
21 COMMUNITY CENTER	21 FUEL STATIONS (GET THE NAME)	1 SINGLE-LOCALITY EA	4 DRY VALLEY
22 RESTURANT	22 COMMUNITY CENTER (GET THE NAME)	2 MULTI-EA LOCALITY	
23 PRISON	23 RESTURANT (GET THE NAME)	3 MULTI LOCALITY EA	
24 POST OFFICE	24 PRISON (GET THE NAME)		
25 COURT	25 POST OFFICE (GET THE NAME)	EA STRATUM	
26 HALL/ COURT BARRY	26 COURT (GET THE NAME)	1 URBAN	
27 PETROL FILLING STATION	27 HALL/ COURT BARRY (GET THE NAME)	2 RURAL	
28 RECREATION	28 RECREATION (GET THE NAME)		

The enumeration on

The enumeration area demarcation exercise methodology used as shown in the chart below is based on Geographic Information System (GIS). This involves the total demarcation of the whole country into Enumeration Areas (smallest units of census operation). The methodology involves Data acquisition, data processing and data output. The activities were carried out in the following order: Pre-field, Field and Post-field as shown in figure 3 below.

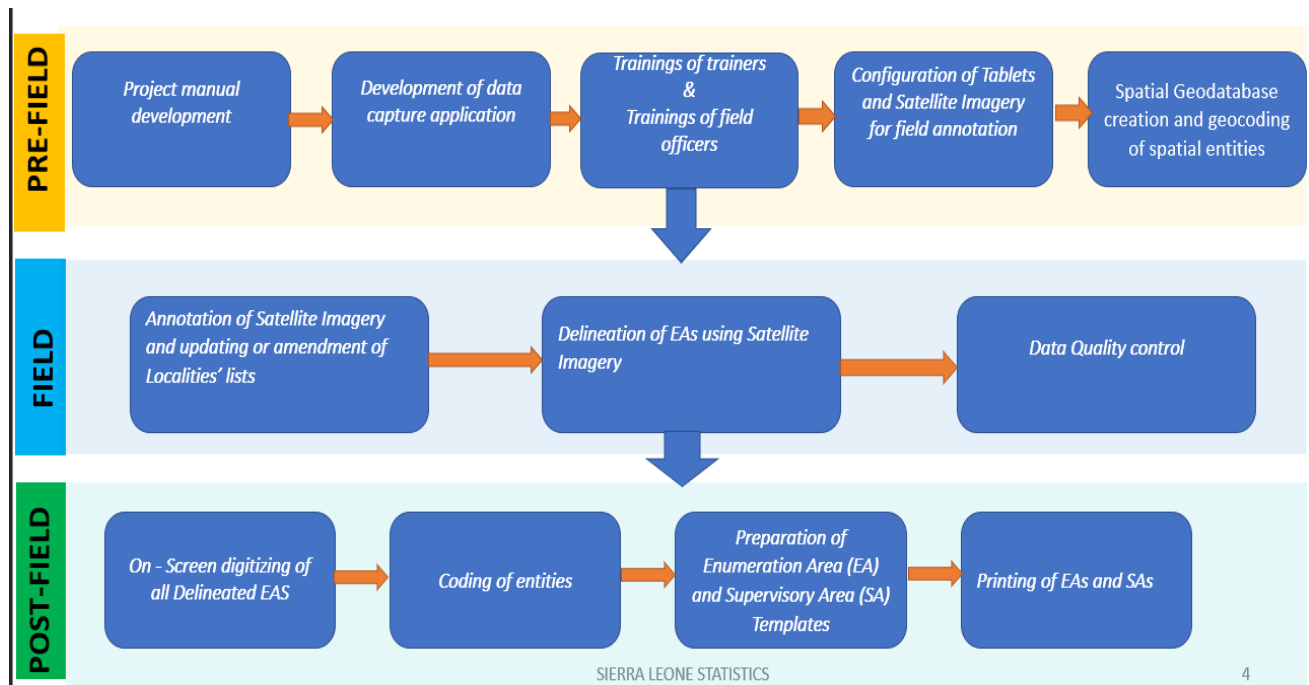


Figure 3: Cartographic Methodology

ENUMERATION AREA (EA) MAP

The Map below shows one of the key output of the digital cartographic mapping ie, EA Map. This is derived after dividing the country into enumeration areas for the purpose of the census field data collection. The entire country was divided in to 23,736 enumeration areas as shown in the Country/National EA map below.

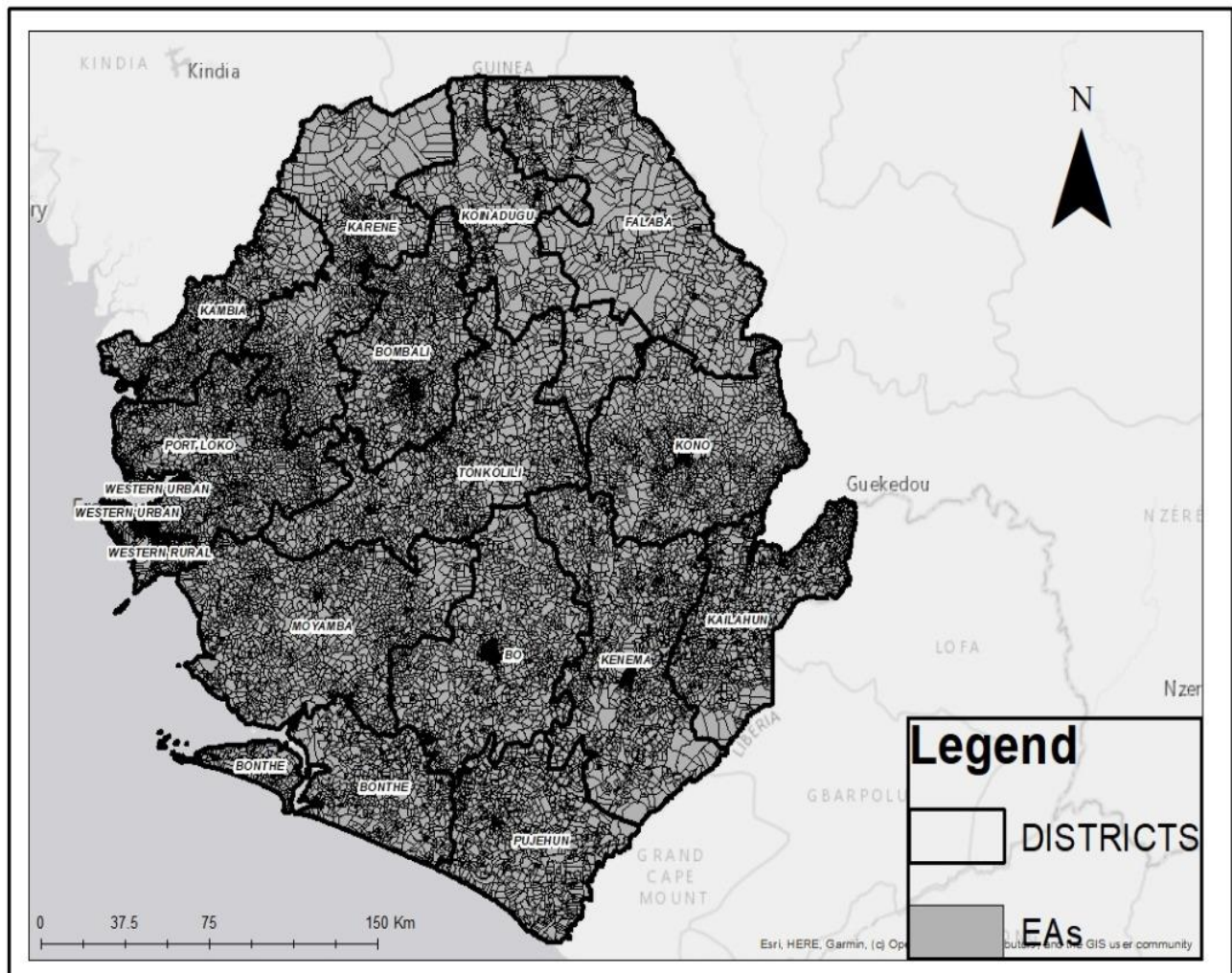


Figure 4: National Enumeration Area Map

BUILDING FRAME

The Map below gives a clear spatial dimension of buildings/structures in the country as they were all mapped with the aid of the EAD Pad and the satellite imagery.

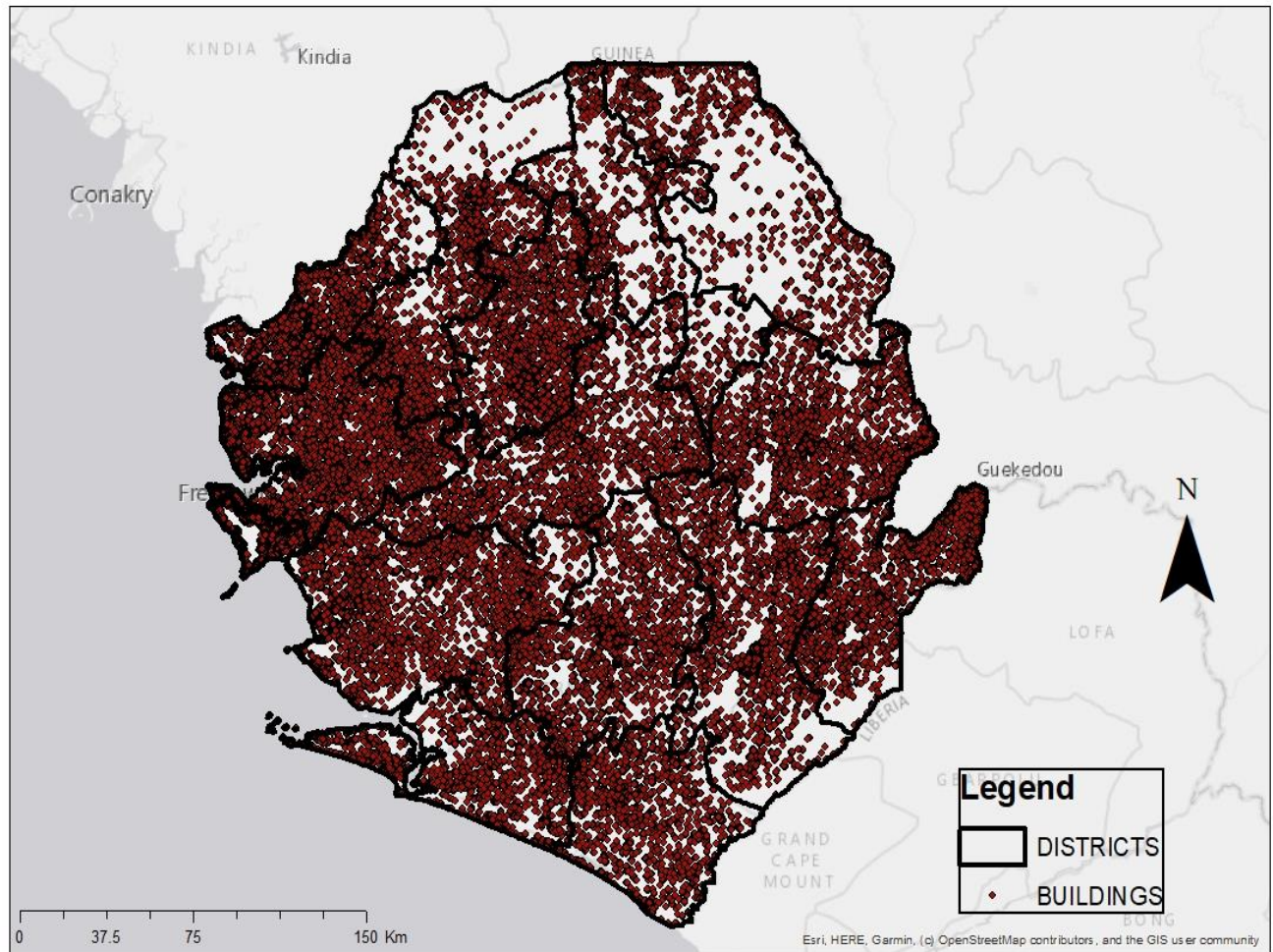


Figure 5: Cartographic Building Frame Map

STRUCTURES BY DISTRICT

Table 2 below gives a detail statistics of structure data collected during the 2021 MTPHC. It reports structures in terms of Residential and non-Residential. A detailed analysis will be done during the final analysis and report writing that will include other attributes about structures in Sierra Leone.

Table 2: Structures By District

Region/District	Residential	Non-Residential	Total Structures Listed
EASTERN	186530	417	186947
KAILAHUN	56697	140	56837
KENEMA	71831	174	72005
KONO	58002	103	58105
NORTHERN	143771	1605	145376
BOMBALI	48446	535	48981
FALABA	20820	182	21002
KOINADUGU	23760	211	23971
TONKOLILI	50745	677	51422
NORTH WESTERN	123047	1064	124111
KAMBIA	38132	236	38368
KARENE	26257	383	26640
PORT LOKO	58658	445	59103
SOUTHERN	189744	659	190403
BO	74103	271	74374
BONTHE	32713	191	32904
MOYAMBA	48293	116	48409
PUJEHUN	34635	81	34716
WESTERN	200004	3758	203762
WESTERN RURAL	94099	1009	95108
WESTERN URBAN	105905	2749	108654
GRAND TOTAL	843254	7503	850599

PART B - THE DIGITAL MAIN ENUMERATION

Population Size and Growth

The size of the population of Sierra Leone in 2021 is 7,548,702 and comprised 3,727,747 (49.4 per cent) males and 3,820,955 (50.6 per cent) females, with a general sex ratio of 97.6 males for every 100 females. This shows that there are more females than males in the population.

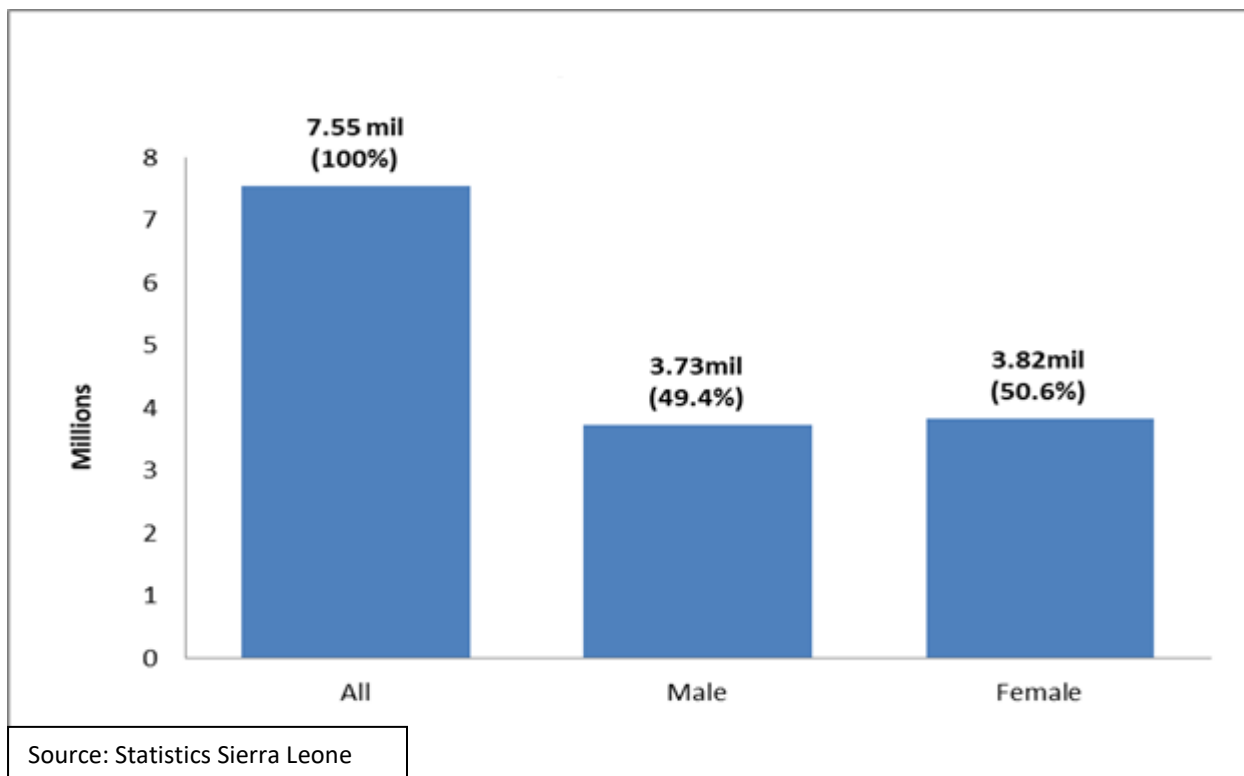


Figure 6: Sierra Leone 2021 Population by Sex

The population size of Sierra Leone in 2021 has more than tripled since the first modern census that was conducted in 1963. In other words, the population of Sierra Leone has grown almost three and half times it was in 1963 (2,180,355).

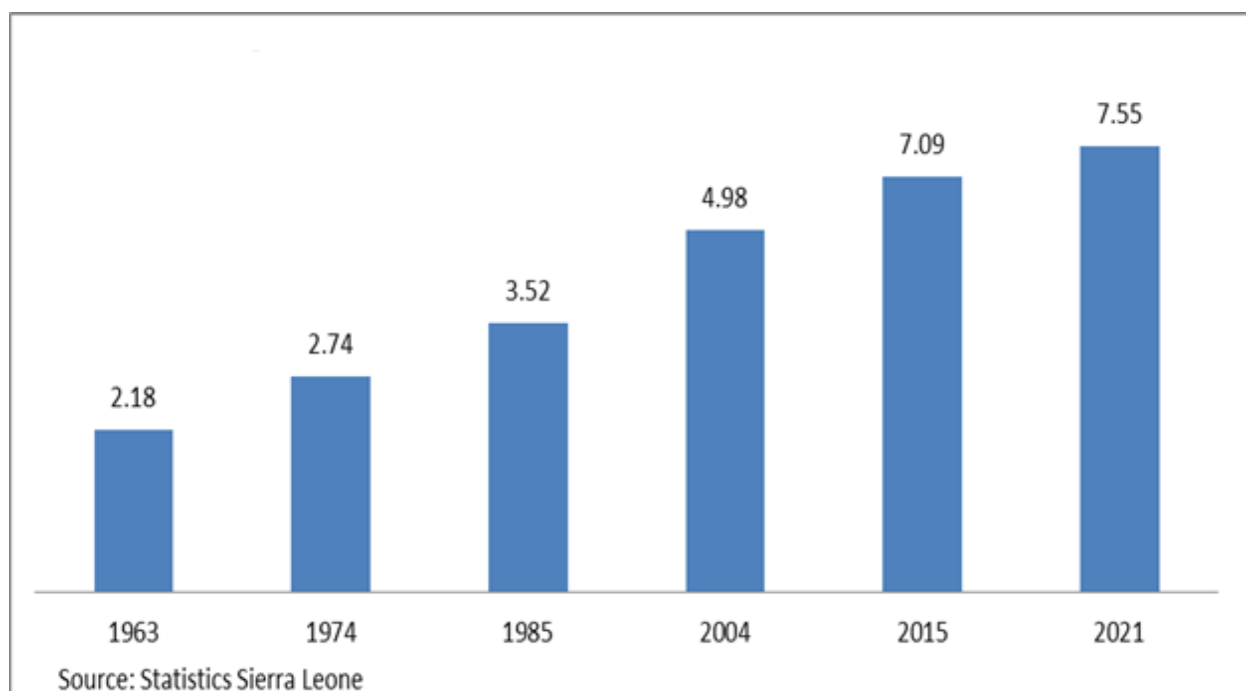


Figure 7: Population Size of Sierra Leone (1963 to 2021) in Millions

Using the exponential growth rate method, the average annual inter-censal rates are computed for each census from the most recent one as shown in the graph below. The rate of growth of the population has been on a downward path (declining) since the 1985 census from an explosive rate of 2.3 per cent to a fast rate of 1.8 per cent in 2004 and then a moderate rate of 1.04 per cent in 2021. This downward trend was however spiked by an explosive rate of 3.2 per cent in 2015.

2021 MTPHC HOUSEHOLD POPULATION AND AVERAGE HOUSEHOLD SIZE

Table 3 below shows the total number of Households and Household population at regional and national levels. The national average household size is 4.3. At regional levels, Western and Northern regions have the lowest average household size (4.0) whilst the Eastern region has the highest average size of 4.7. The total institutional population is 15,135 and the total household population is 7,533,567, giving a total national population of 7,548,702.

Table 3: 2021 MTPHC Household Population and Average Household Size

REGION	INSTITUTION	HOUSEHOLD	TOTAL	AVERAGE HH
EASTERN	1122	1942488	1943610	4.68
NORTHERN	2837	1313994	1316831	4.01
NORTHWESTERN	2192	1183858	1186050	4.36
SOUTHERN	1841	1829040	1830881	4.21
WESTERN	7143	1264187	1271330	3.92
NATIONAL	15135	7533567	7548702	4.25

The highest rate of growth was observed during 2004 to 2015 (see figure 3).

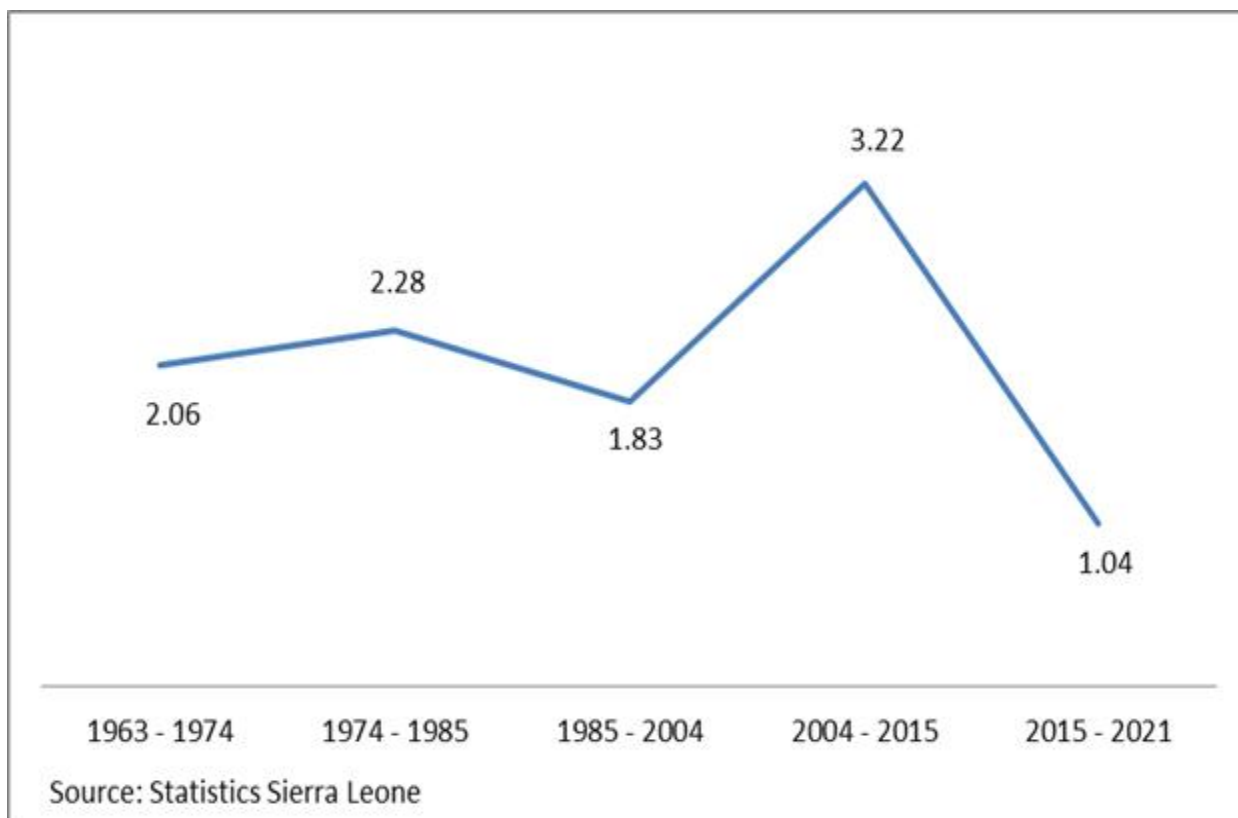


Figure 8: Average Annual Inter-Censal Growth Rates

The average annual growth rates are computed for each census while using the 1963 census as a point of reference as shown in the graph above. A further look at the pace of growth of the population of Sierra Leone during post-independence period shows

that the population has been growing at an average annual rate of 2.1 per cent over this 58 years span (1963 to 2021); which is very similar to the rate observed during the 1963 to 1974 period. The highest growth rate (2.3 per cent) was experienced during the 1963 to 2015 period (See figure 8).

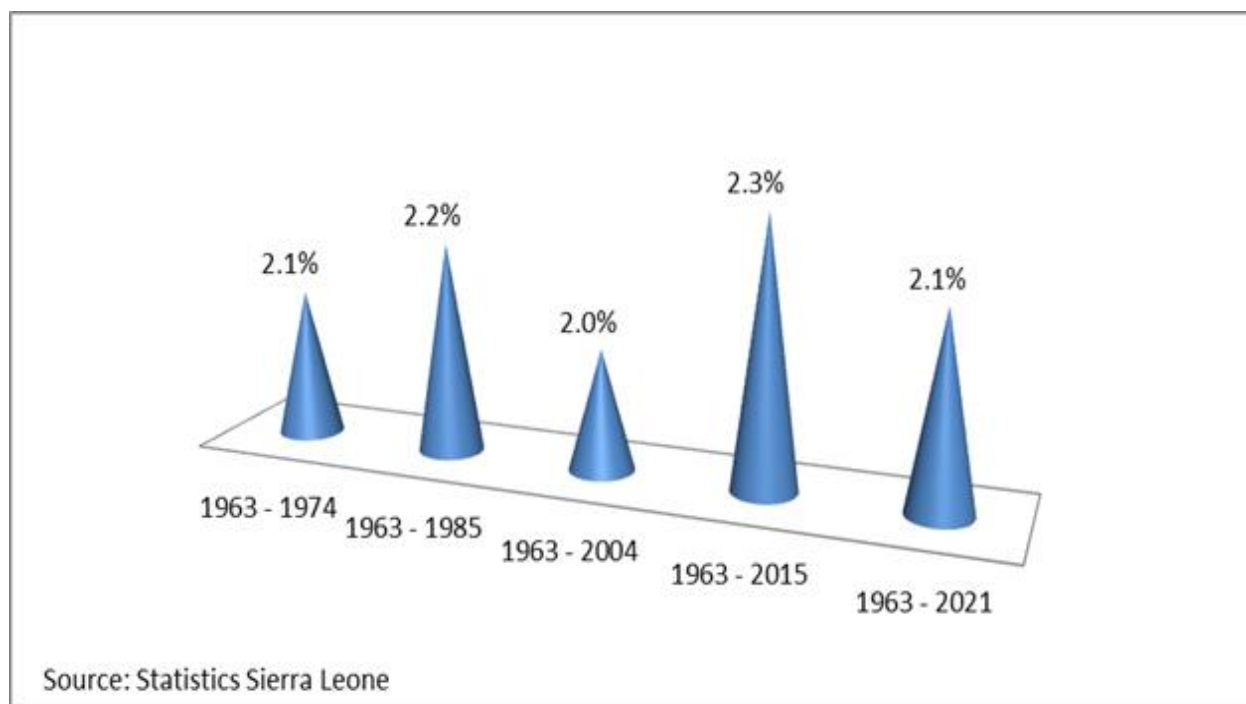


Figure 9: Average Annual Growth Rates from 1963

INTER-CENSAL PERCENTAGE CHANGE (2015 TO 2021)

Table 4 below gives a summary of the sizes of the population for each census count for all the modern censuses conducted in Sierra Leone, as well as the changes in the population that have occurred during the inter-censal periods. This includes both the average annual growth rates and the inter-censal percentage change.

Table 4: Population Change, Sierra Leone 1963 to 2021

Census Year	Population Size	Average Annual Growth Rate from 1963	Census Period	Number of years	Average Annual Growth Rate %	Inter-censal percentage Change
1963	2180355					
1974	2735159	2.06	1963 – 1974	11	2.06	25.45
1985	3515812	2.17	1974 – 1985	11	2.28	28.54
2004	4976871	2.01	1985 – 2004	19	1.83	41.56
2015	7092113	2.27	2004 – 2015	11	3.22	42.50
2021	7548702	2.14	2015 – 2021	6	1.04	6.44
<i>Source: Statistics Sierra Leone</i>						

Unlike the average annual growth rate which measures change for each of the years during a period, the inter-censal percentage change looks at the increase or decrease in the population size for the entire period without taking the number of years in the inter-censal period into consideration. From 1963 to 2021, six censuses (five decennial and a mid-term) have been conducted in Sierra Leone. Figures 6, 7, 8 and 9 have depicted the change in size as well as the pace of the change from 1963 to 2021.

Observing the population change from the 2015 census to the current count in 2021, the population of Sierra Leone has increased in size by 6.4 per cent.

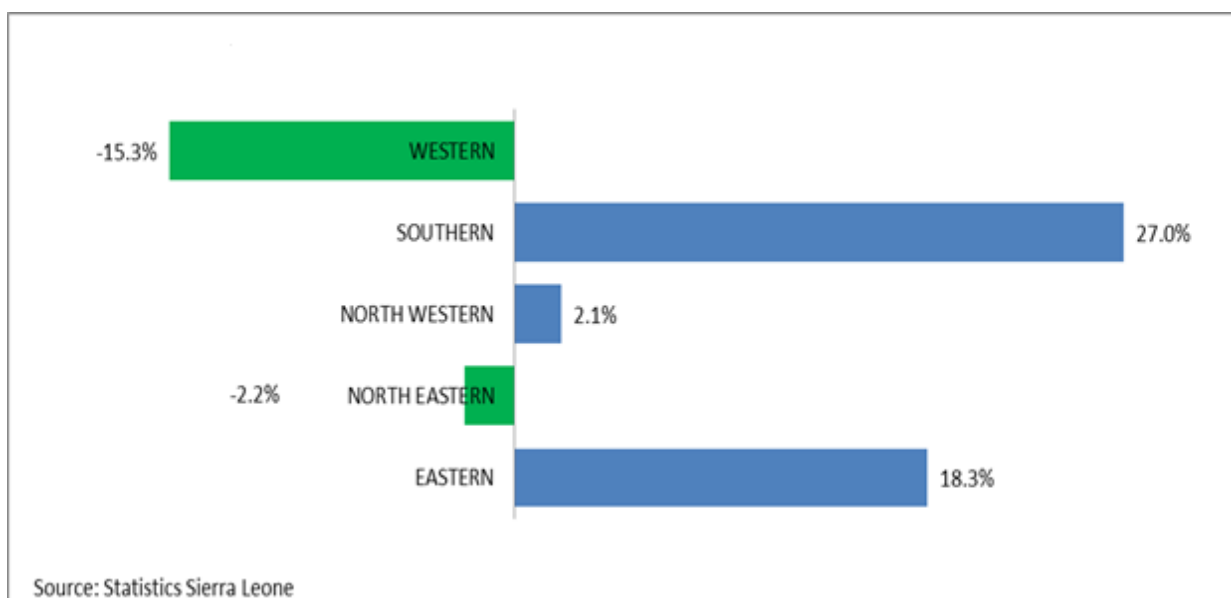


Figure 10: Inter-censal Percentage Change by Regions, Sierra Leone 2015 to 2021

During this same period, three of the five regions increased in population size, while the remaining two experienced reductions in their populations. The population size of the Southern region increased by 27 per cent, followed by the Eastern region with 18.3 per cent increase. The North-western region also increased by 2.1 per cent. The population size of the Western region reduced by 15.3 per cent, followed by the Northern region with a reduction of 2.2 per cent in its population size.

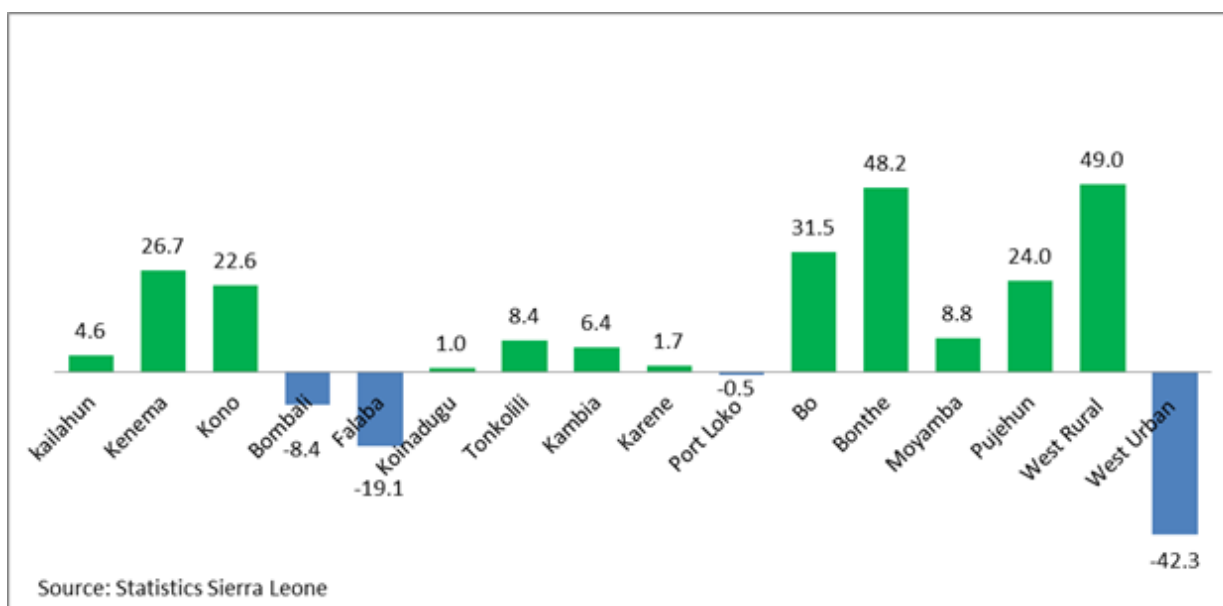


Figure 11: Inter-censal Percentage Change by District, Sierra Leone 2015 to 2021

SPATIAL DISTRIBUTION OF THE POPULATION

This section looks at the share of the population by different administrative levels. Places with the largest share in terms of their population sizes are considered as the most populous. The Eastern region has the largest share of the population, followed by the Southern region. The North-Western region is the least populous region. On the whole, half of the population of Sierra Leone is found in the Eastern and Southern Region, while the other half is located in the Northern, North-Western and Western regions.

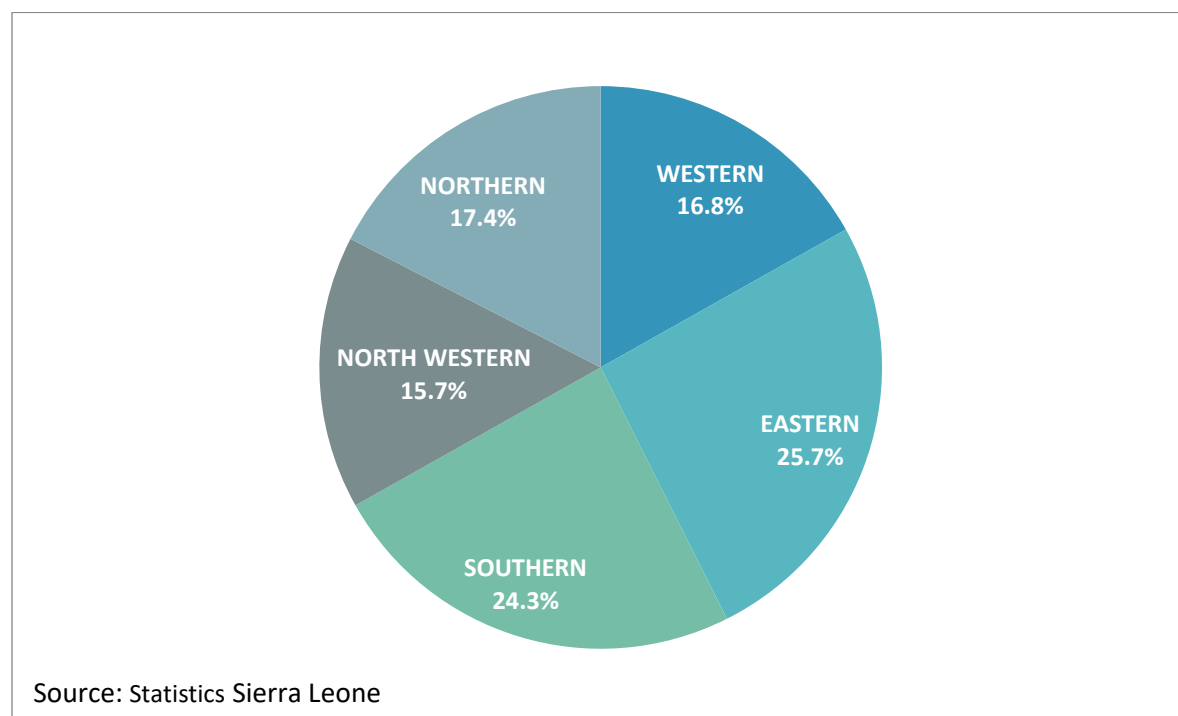


Figure 12: Population Share by Region, Sierra Leone 2021

At the district level, Kenema has the largest share (10.2 per cent) of the population, followed by Bo (10 per cent). Western Rural, Kono and Western Urban districts also have substantial share of the population. Falaba district is the least populous district (2.2 per cent), followed by Koinadugu district (2.7 per cent).

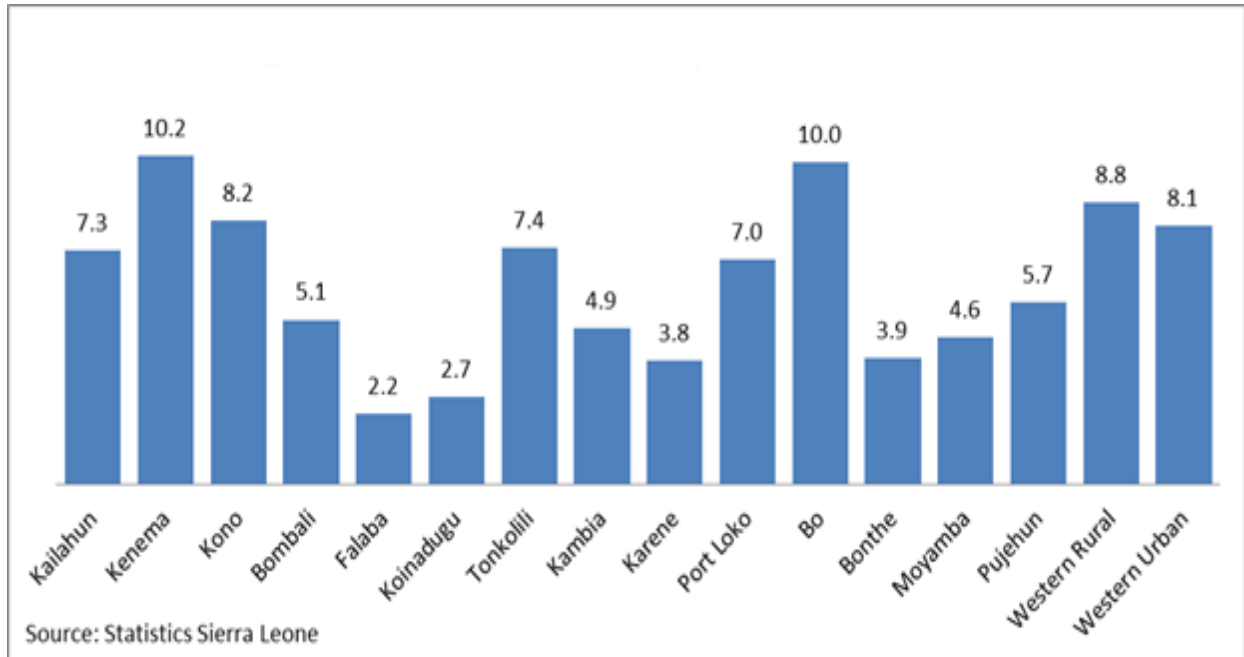


Figure 13: Percentage Share of the Population by District, Sierra Leone 2021

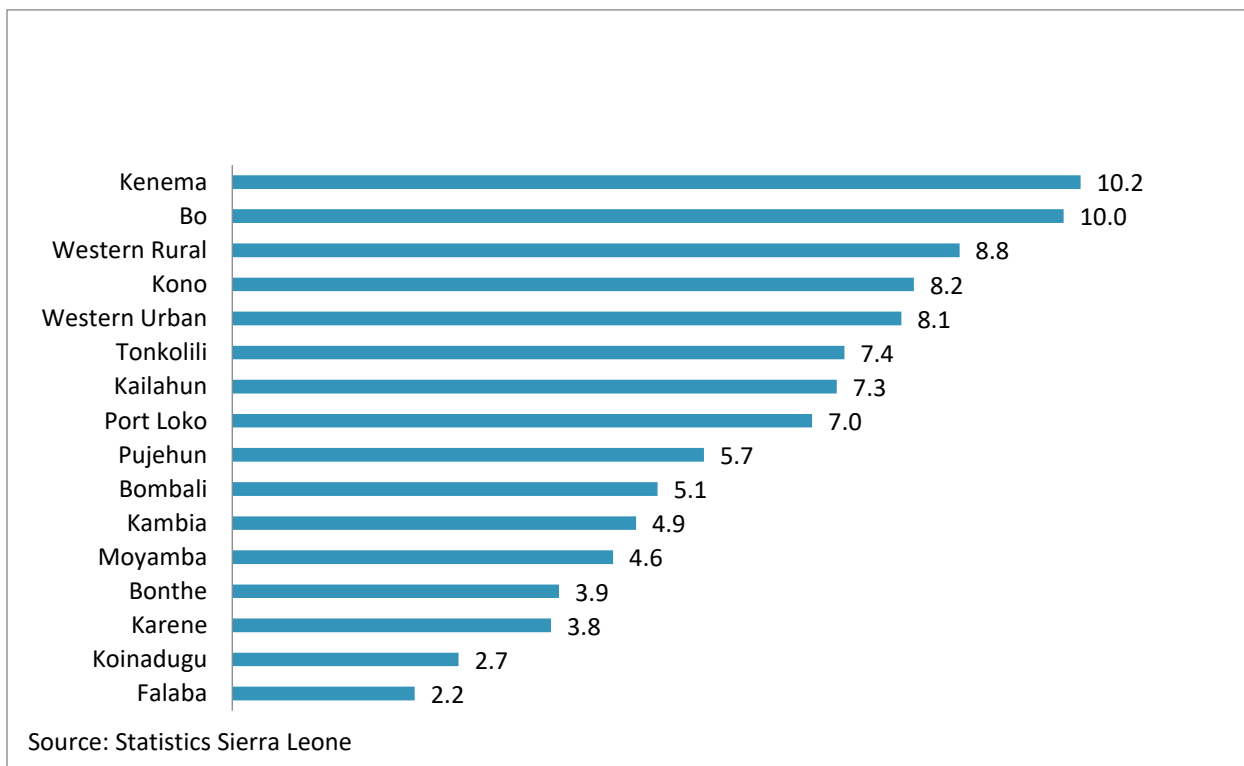


Figure 14: Population Share by District, Sierra Leone 2021

POPULATION DENSITY

Population density takes into consideration, the size of the population in relation to the land area they occupy. The land area of Sierra Leone is 72,783 square kilometres with a density of 104 persons per square kilometre. The Western region, in which the capital city Freetown is located, is the most densely populated, with a density of 1,826.6 persons per square kilometre. This is followed by the Eastern Region (123.5 persons per square kilometre), the Southern region (90.5 persons per square kilometre), the North Western region (87.7 persons per square kilometre) and the Northern region (58.3 persons per square kilometre) which has the smallest density among the regions.

Figure 15 below shows a clear district spatial view of population density per square kilometers

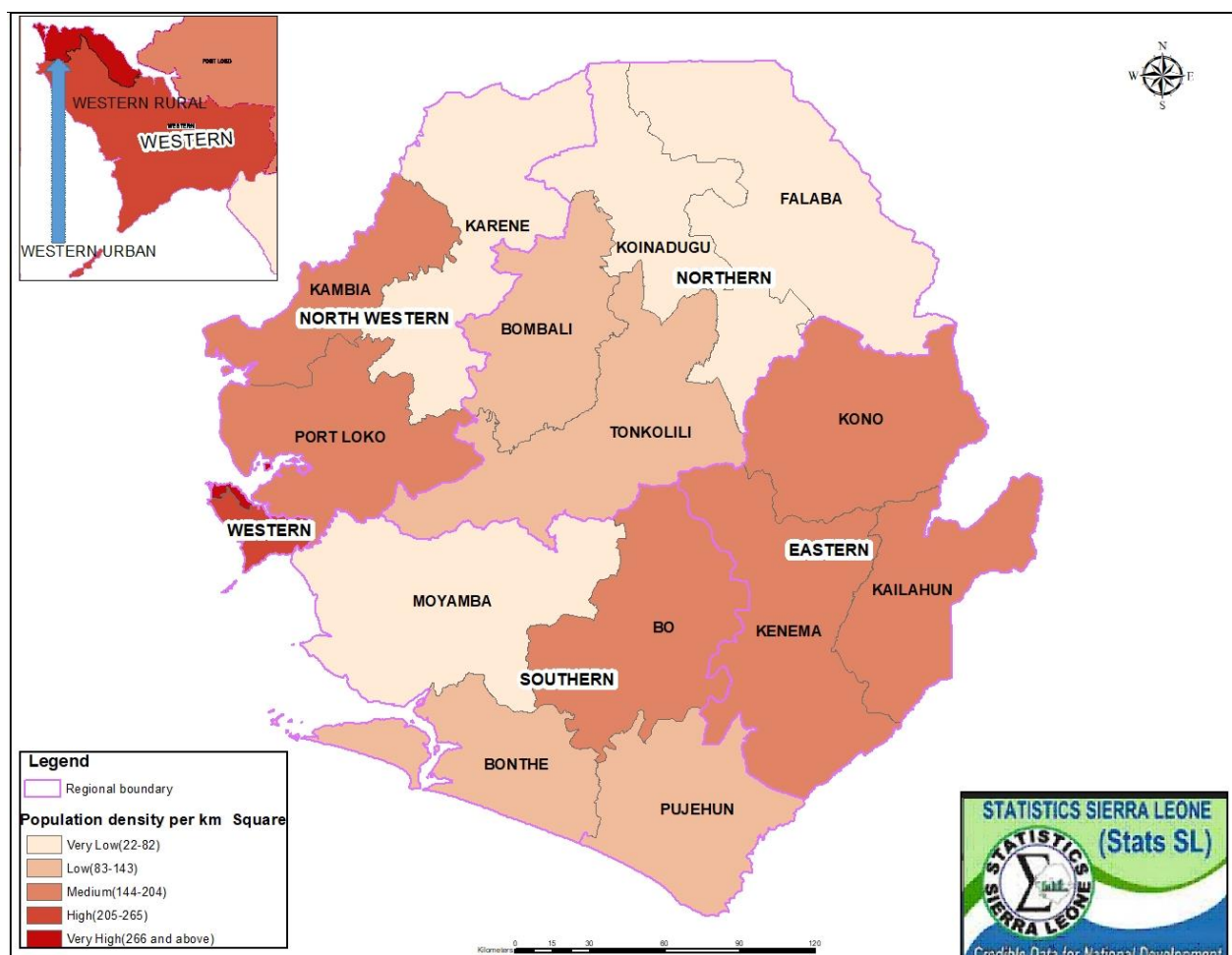


Figure 15: Population Density by District

Falaba district, which contrasts with Western Urban district in terms of land area, is the least densely populated. It has a density of 22.3 persons per square kilometre due to its share of land area (7,457 square kilometres) which is the largest among the districts. Western Urban district on the other hand has the smallest land area (83 square kilometres) and a population density of 7,339.5 persons per square kilometre; making it the most densely populated district in the country. The Western Rural district (1,080.2 persons per square kilometre) ranks second in terms of population density. Six other districts have population densities that are above the national average. These include Kailahun, Kenema, Bo, Kambia, Kono and Port Loko.

SEX DISTRIBUTION BY DISTRICTS

The distribution of the total population of Sierra Leone by sex shows that females are in the majority. Given the population size of Sierra Leone in 2021, there is a difference of 93,208 males in the population, which means that females outnumber males by 2.5 per cent. The same pattern of variation between the sexes is observed for all of the regions in Sierra Leone. This is most pronounced in the Western region where females outnumber males by 6.9 per cent but nearly balanced in the Eastern region with females outnumbering males by just 0.4 per cent. These regions have sex ratios of 93.5 and 99.6 males per hundred females respectively.

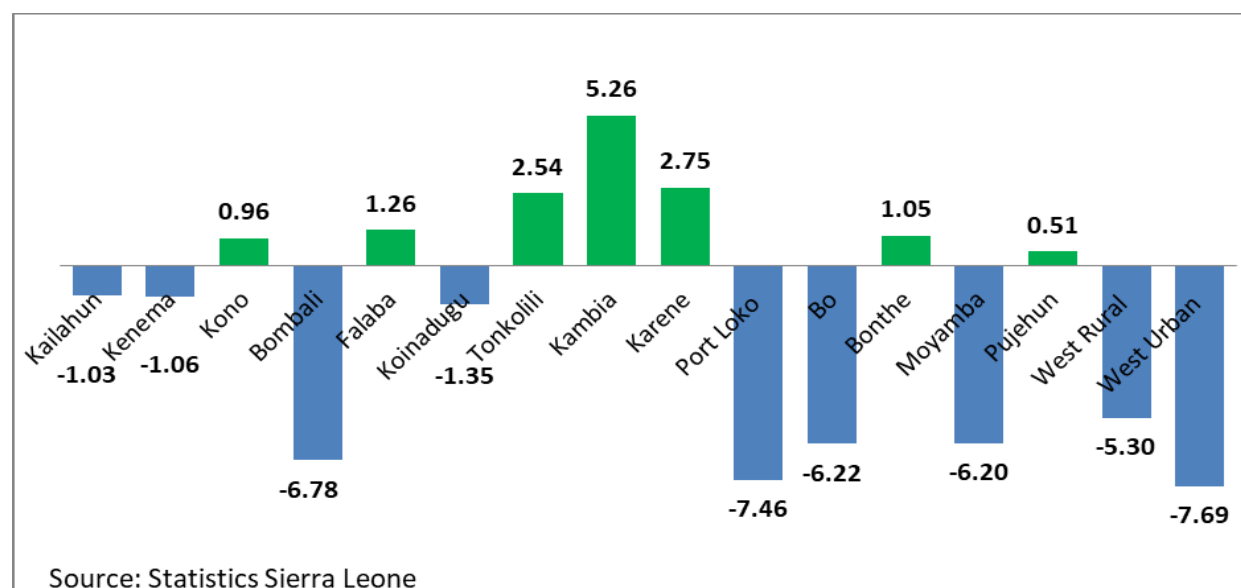


Figure 16: Percent Excess or Deficit of Males by District, Sierra Leone 2021

While the national and regional population distributions show a single pattern of more females, the pattern is mixed at the district level, with some having more males than females. The pattern of male variation is most pronounced in the Western Urban district, followed by Port Loko, Bombali, Bo, Moyamba, Western Rural, Koinadugu, Kenema and Kailahun districts. These districts have sex ratios ranging from 92.3 in Western Urban to 99.0 in Kailahun districts respectively. On the other hand, a reversed pattern of excess males in the population is observed in Kambia, Karene, Tonkolili, Falaba, Bonthe, Kono and Pujehun districts; where the sex ratios range from 105.3 in Kambia to 100.5 in Pujehun districts.

Below is the updated map of Sierra Leone showing all the administrative districts. It shows the country's 16 administrative districts, this was done in the year 2017.

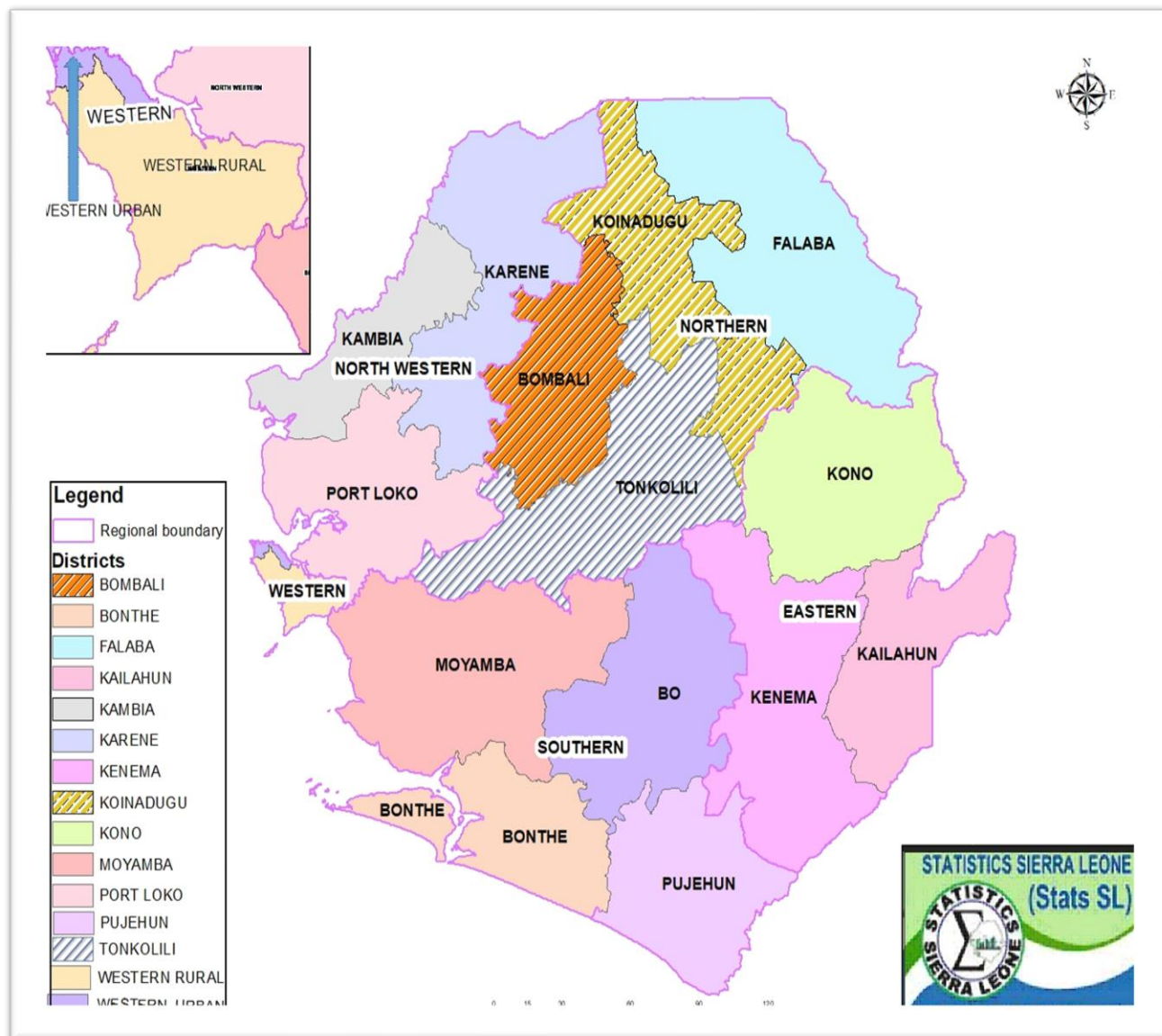


Figure 17: Map Of Sierra Leone Showing Administrative Districts

APPENDIX

Table A: Population Change (1963 To 2021), Sierra Leone

Year	Total	Male	Female	% Male	% Female	Sex Ratio	Inter-Censal % Change From 1963	Average Annual Growth Rate From 1963	Inter-Censal Period	Inter-Censal % Change	Average Annual Growth Rate
1963	2180355					98.4					
1974	2735159					98.8	25.4	2.06	1963 - 1974	25.5	2.06
1985	3515812	1735163	1780649	49.4	50.6	98.7	61.2	2.17	1974 - 1985	28.5	2.28
2004	4976871	2420218	2556653	48.6	51.4	94.7	128.3	2.01	1985 - 2004	41.6	1.83
2015	7092113	3490978	3601135	49.2	50.8	96.9	225.3	2.27	2004 - 2015	42.5	3.22
2021	7548702	3727747	3820955	49.4	50.6	97.6	246.2	2.14	2015 - 2021	6.4	1.04

Table B: Population By Administrative Districts, Sierra Leone (1963 – 2015)

ADMINISTRATIVE DISTRICT	1963 POPULATION			1974 POPULATION			1985 POPULATION			2004 POPULATION			2015 POPULATION		
	N	%	SR	N	%	SR	N	%	SR	N	%	SR	N	%	SR
Kailahun	150236	6.9	87.3	180365	6.6	92	233839	6.7	93.6	358190	7.2	93.6	526379	7.4	98.0
Kenema	227428	10.4	117.5	266636	9.7	104.5	337055	9.6	104.3	497948	10.0	102.8	609891	8.6	97.5
Kono	167915	7.7	118.1	328930	12.0	125.8	389657	11.1	111.8	335401	6.7	106.1	506100	7.1	99.8
Bombali	198776	9.1	85.2	233626	8.5	87.7	317729	9.0	97.6	408390	8.2	92.9	606544	8.6	95.7
Kambia	137806	6.3	92.3	155341	5.7	90.7	186231	5.3	91.3	270462	5.4	89.6	345474	4.9	92.0
Koinadugu	129061	5.9	93.2	158626	5.8	91.9	183286	5.2	91.5	265758	5.3	88.3	409372	5.8	99.8
Port Loko	247463	11.3	95.2	292244	10.7	93.2	329344	9.4	92.2	453746	9.1	88.4	615376	8.7	92.1
Tonkolili	184460	8.5	89.3	206321	7.5	90.5	243051	6.9	96.6	347197	7.0	87.3	531435	7.5	98.1
Bo	209754	9.6	103.8	217711	8.0	94.8	268671	7.6	96.8	463668	9.3	96.3	575478	8.1	95.1
Bonthe	80139	3.7	95.6	87561	3.2	95.4	105007	3.0	96.7	139687	2.8	92.4	200781	2.8	97.3
Moyamba	167425	7.7	94.1	188745	6.9	93.6	250514	7.1	93.7	260910	5.2	90.1	318588	4.5	93.2
Pujehun	84869	3.9	88.9	102741	3.8	91	117185	3.3	92.1	228392	4.6	93.1	346461	4.9	95.1
Western Area Rural	67106	3.1	113	40065	1.5	105	84467	2.4	107	174249	3.5	97.7	444270	6.3	99.3
Western Area Urban	127917	5.9	111	276247	10.1	112	469776	13.4	108	772873	15.5	98.5	1055964	14.9	100.1
SIERRA LEONE	2180355	100	98.4	2735159	100	98.8	3515812	100	98.7	4976871	100	94.7	7092113	100	96.9

N = NUMBER OF PERSONS	% = SHARE OF TOTAL POPULATION	SR = SEX RATION, NUMBER OF MALES PER 100 FEMALES
------------------------------	--------------------------------------	---

Table C: Population By Administrative Districts, Sierra Leone (2015 – 2021)

Administrative District	2021 CENSUS		2015 CENSUS		2021 CENSUS		Sex Ratio	Percent Male Excess/Deficit	2015 CENSUS		Sex Ratio	2015 –2021	Land Area (Sq Km)	Population Density (Persons Per Sq. Km)
	Male	Female	Male	Female	N	%			N	%		Inter-Censal Percent Change		
Kailahun	273793	276642	260586	265793	550435	7.3	99.0	–1.03	526379	7.4	98.0	4.6	3959	139
Kenema	384173	388299	301104	308787	772472	10.2	98.9	–1.06	609891	8.6	97.5	26.7	6364	121.4
Kono	311832	308871	252751	253349	620703	8.2	101.0	0.96	506100	7.1	99.8	22.6	5413	114.7
Bombali	186824	200412	205914	217046	387236	5.1	93.2	–6.78	422960	6.0	94.9	–8.4	3885	99.7
Falaba	83622	82583	103691	101662	166205	2.2	101.3	1.26	205353	2.9	102.0	–19.1	7457	22.3
Koinadugu	102364	103769	100807	103212	206133	2.7	98.6	–1.35	204019	2.9	97.7	1.0	4964	41.5
Tonkolili	282127	275130	254601	259383	557257	7.4	102.5	2.54	513984	7.2	98.2	8.4	6299	88.5
Kambia	188560	179139	165541	179933	367699	4.9	105.3	5.26	345474	4.9	92.0	6.4	3025	121.6
Karene	147124	143189	139244	146302	290313	3.8	102.7	2.75	285546	4.0	95.2	1.7	5830	49.8
Port Loko	253790	274248	255030	275835	528038	7.0	92.5	–7.46	530865	7.5	92.5	–0.5	4666	113.2
Bo	366346	390629	280569	294909	756975	10.0	93.8	–6.22	575478	8.1	95.1	31.5	5473	138.3
Bonthe	149555	148006	99014	101767	297561	3.9	101.0	1.05	200781	2.8	97.3	48.2	3589	82.9
Moyamba	167836	178935	153699	164889	346771	4.6	93.8	–6.20	318588	4.5	93.2	8.8	6972	49.7
Pujehun	215332	214242	168869	177592	429574	5.7	100.5	0.51	346461	4.9	95.1	24.0	4192	102.5
Western Area Rural	322058	340098	221351	222919	662156	8.8	94.7	–5.30	444270	6.3	99.3	49.0	613	1080.2
Western Area Urban	292411	316763	528207	527757	609174	8.1	92.3	–7.69	1055964	14.9	100.1	–42.3	83	7339.5
SIERRA LEONE	3727747	3820955	3490978	3601135	7548702	100	97.6	–2.44	7092113	100	96.9	6.4	72783	103.7

Table D: Population By Region And Local Councils, Sierra Leone (2015 – 2021)

LOCAL COUNCILS	2021 CENSUS		2015 CENSUS		Both Sexes	2021 CENSUS			Both Sexes	2015 CENSUS		2015 to 2021 intercensal %Change	Land Area (Sq Km)	Population Density (Persons per Sq Km)
	Male	Female	Male	Female		Percent Share of Total population	Sex Ratio	Percent Male Excess/ Deficit		Percent Share of Total population	Sex Ratio			
Kailahun District	273793	276642	260586	265793	550435	7.2918	99.0	-1.0	526379	7.4	98.0	4.6	3959	139.0
Kenema District	260940	256422	203286	206162	517362	6.8537	101.8	1.8	409448	5.8	98.6	26.4	6312	82.0
Kenema City	123233	131877	97818	102625	255110	3.3795	93.4	-6.6	200443	2.8	95.3	27.3	52	4906.0
Kono District	214416	209869	188893	189177	424285	5.6206	102.2	2.2	378070	5.3	99.8	12.2	5384	78.8
Koidu City	97416	99002	63858	64172	196418	2.6020	98.4	-1.6	128030	1.8	99.5	53.4	28	7014.9
EASTERN	969798	973812	814441	827929	1943610	25.7	99.6	-0.4	1642370	23.2	98.4	18.3	15736	123.5
Bombali District	145887	156233	143775	153215	302120	4.0023	93.4	-6.6	296990	4.2	93.8	1.7	3870	78.1
Makeni City	40937	44179	62139	63831	85116	1.1276	92.7	-7.3	125970	1.8	97.3	-32.4	14	6079.7
Falaba District	83622	82583	103691	101662	166205	2.2018	101.3	1.3	205353	2.9	102.0	-19.1	7456	22.3
Koinadugu District	102364	103769	100807	103212	206133	2.7307	98.6	-1.4	204019	2.9	97.7	1.0	4963	41.5
Tonkolili District	282127	275130	254601	259383	557257	7.3822	102.5	2.5	513984	7.2	98.2	8.4	6298	88.5
NORTHERN	654937	661894	665013	681303	1316831	17.4	98.9	-1.1	1346316	19.0	97.6	-2.2	22605	58.3
Kambia District	188560	179139	165541	179933	367699	4.8710	105.3	5.3	345474	4.9	92.0	6.4	3025	121.6
Karene District	147124	143189	139244	146302	290313	3.8459	102.7	2.7	285546	4.0	95.2	1.7	5829	49.8
Port Loko District	234385	252849	234090	253738	487234	6.4545	92.7	-7.3	487828	6.9	92.3	-0.1	4454	109.4
Port Loko City	19405	21399	20940	22097	40804	0.5405	90.7	-9.3	43037	0.6	94.8	-5.2	212	192.5
NORTH WESTERN	589474	596576	559815	602070	1186050	15.7	98.8	-1.2	1161885	16.4	93.0	2.1	13520	87.7
Bo District	261892	272008	196571	204538	533900	7.0727	96.3	-3.7	401109	5.7	96.1	33.1	5447	98.0
Bo City	104454	118621	83998	90371	223075	2.9551	88.1	-11.9	174369	2.5	92.9	27.9	25	8923.0
Bonthe District	143590	141595	94089	96617	285185	3.7779	101.4	1.4	190706	2.7	97.4	49.5	3577	79.7
Bonthe Urban	5965	6411	4925	5150	12376	0.1639	93.0	-7.0	10075	0.1	95.6	22.8	13	952.0
Moyamba District	167836	178935	153699	164889	346771	4.5938	93.8	-6.2	318588	4.5	93.2	8.8	6971	49.7
Pujehun District	215332	214242	168869	177592	429574	5.6907	100.5	0.5	346461	4.9	95.1	24.0	4192	102.5
SOUTHERN	899069	931812	702151	739157	1830881	24.3	96.5	-3.5	1441308	20.3	95.0	27.0	20226	90.5

Table D: - (Cont'd)

LOCAL COUNCILS	2021 CENSUS		2015 CENSUS		Both Sexes	2021 CENSUS			Both Sexes	2015 CENSUS		2015 to 2021 intercensal %Change	Land Area (Sq Km)	Population Density (Persons per Sq Km)
	Male	Female	Male	Female		Percent Share of Total population	Sex Ratio	Percent Male Excess/ Deficit		Percent Share of Total population	Sex Ratio			
Western Rural District	322058	340098	221351	222919	662156	8.7718	94.7	-5.3	444270	6.3	99.3	49.0	613	1080.2
Freetown City	292411	316763	528207	527757	609174	8.0699	92.3	-7.7	1055964	14.9	100.1	-42.3	83	7339.4
Western	614469	656861	749558	750676	1271330	16.8	93.5	-6.5	1500234	21.2	99.9	-15.3	696	1826.6
SIERRA LEONE	3727747	3820955	3490978	3601135	7548702	100.0000	97.6	-2.4	7092113	100.0	96.9	6.4	72783	103.7

Table E: Distribution Of Population By Chiefdom, Sex And Density, Sierra Leone (2015 – 2021)

District	Chiefdom / Council	2021 CENSUS					Percent Male Excess/Deficit	Land Area (Sq Km)	Population Density (Persons per Sq Km)	2015 CENSUS				Sex Ratio	2015 to 2021 intercensal %Change
		Male	Female	Both Sexes	Percent Share of Total population	Sex Ratio				Male	Female	Both Sexes	Percent Share of Total population		
Kailahun	Dea	8289	8203	16492	0.2	101.0	1.05	140	117.8	6715	6699	13414	0.2	100.2	22.9
Kailahun	Jahn	4821	4938	9759	0.1	97.6	-2.37	73	133.7	5275	4982	10257	0.1	105.9	-4.9
Kailahun	Jawie	25524	25764	51288	0.7	99.1	-0.93	359	142.9	24938	26013	50951	0.7	95.9	0.7
Kailahun	Kissi Kama	10839	10648	21487	0.3	101.8	1.79	105	204.6	10201	10220	20421	0.3	99.8	5.2
Kailahun	Kissi Teng	12275	12468	24743	0.3	98.5	-1.55	164	150.9	22965	22184	45149	0.6	103.5	-45.2
Kailahun	Kissi Tongi	17794	18123	35917	0.5	98.2	-1.82	263	136.6	25820	25130	50950	0.7	102.7	-29.5
Kailahun	Kpeje Bongre	10488	10694	21182	0.3	98.1	-1.93	181	117	12026	13143	25169	0.4	91.5	-15.8
Kailahun	Kpeje West	14000	14188	28188	0.4	98.7	-1.33	157	179.5	14135	13409	27544	0.4	105.4	2.3
Kailahun	Luawa	56061	57836	113897	1.5	96.9	-3.07	707	161.1	38665	42379	81044	1.1	91.2	40.5
Kailahun	Malema	19117	18646	37763	0.5	102.5	2.53	710	53.2	18980	18115	37095	0.5	104.8	1.8
Kailahun	Mandu	15690	16952	32642	0.4	92.6	-7.44	206	158.5	14791	16193	30984	0.4	91.3	5.4
Kailahun	Njaluahun	26855	26686	53541	0.7	100.6	0.63	256	209.1	25676	25283	50959	0.7	101.6	5.1
Kailahun	Penguia	15725	14978	30703	0.4	105.0	4.99	214	143.5	13193	13079	26272	0.4	100.9	16.9
Kailahun	Upper Bambara	25910	25990	51900	0.7	99.7	-0.31	227	228.6	12793	14055	26848	0.4	91.0	93.3
Kailahun	Yawei	10405	10528	20933	0.3	98.8	-1.17	197	106.3	14413	14909	29322	0.4	96.7	-28.6
Kenema	Dama	18948	19046	37994	0.5	99.5	-0.51	403	94.3	14721	16030	30751	0.4	91.8	23.6
Kenema	Dodo	10730	10413	21143	0.3	103.0	3.04	324	65.3	11738	11120	22858	0.3	105.6	-7.5
Kenema	Gaura	17267	17437	34704	0.5	99.0	-0.97	400	86.8	8723	9494	18217	0.3	91.9	90.5
Kenema	Gorama Mende	24473	23859	48332	0.6	102.6	2.57	654	73.9	21609	21750	43359	0.6	99.4	11.5
Kenema	Kandu Leppima	11657	11065	22722	0.3	105.4	5.35	227	100.1	9274	8955	18229	0.3	103.6	24.6
Kenema	Koya_Kenema	9641	9697	19338	0.3	99.4	-0.58	385	50.2	6732	6750	13482	0.2	99.7	43.4
Kenema	Langrama	2202	2272	4474	0.1	96.9	-3.08	54	82.9	1673	1911	3584	0.1	87.5	24.8

Table E:- (Cont'd)

District	Chiefdom / Council	2021 CENSUS					Percent Male Excess/Deficit	Land Area (Sq Km)	Population Density (Persons per Sq Km)	2015 CENSUS				Sex Ratio	2015 to 2021 intercensal %Change
		Male	Female	Both Sexes	Percent Share of Total population	Sex Ratio				Male	Female	Both Sexes	Percent Share of Total population		
Kenema	Lower Bambara	47038	44439	91477	1.2	105.8	5.85	688	133	39206	37075	76281	1.1	105.7	19.9
Kenema	Malegohun	10159	9360	19519	0.3	108.5	8.54	240	81.3	10195	10349	20544	0.3	98.5	-5.0
Kenema	Niawa	6393	6434	12827	0.2	99.4	-0.64	249	51.5	3661	4154	7815	0.1	88.1	64.1
Kenema	Nomo	4854	4497	9351	0.1	107.9	7.94	352	26.6	2838	2653	5491	0.1	107.0	70.3
Kenema	Nongowa	33676	33891	67567	0.9	99.4	-0.63	572	118.1	22018	23544	45562	0.6	93.5	48.3
Kenema	Simbaru	11580	11288	22868	0.3	102.6	2.59	266	86	8642	8755	17397	0.2	98.7	31.4
Kenema	Small Bo	20448	21296	41744	0.6	96.0	-3.98	429	97.3	14133	15365	29498	0.4	92.0	41.5
Kenema	Tunkia	20662	20658	41320	0.5	100.0	0.02	745	55.5	17848	18206	36054	0.5	98.0	14.6
Kenema	Wandor	11212	10770	21982	0.3	104.1	4.10	324	67.8	10275	10051	20326	0.3	102.2	8.1
Kenema	Kenema City	123233	131877	255110	3.4	93.4	-6.55	52	4906	97818	102625	200443	2.8	95.3	27.3
Kono	Fiama	6738	6677	13415	0.2	100.9	0.91	283	47.4	7563	7892	15455	0.2	95.8	-13.2
Kono	Gbane	14010	14033	28043	0.4	99.8	-0.16	364	77	12155	12249	24404	0.3	99.2	14.9
Kono	Gbane Kandor	4537	4951	9488	0.1	91.6	-8.36	104	91.2	5662	6241	11903	0.2	90.7	-20.3
Kono	Gbense	10466	10680	21146	0.3	98.0	-2.00	208	101.7	7854	8010	15864	0.2	98.1	33.3
Kono	Gorama Kono	6941	6662	13603	0.2	104.2	4.19	321	42.4	9240	9054	18294	0.3	102.1	-25.6
Kono	Kamara	10027	9083	19110	0.3	110.4	10.39	124	154.1	10218	9194	19412	0.3	111.1	-1.6
Kono	Lei	14063	14876	28939	0.4	94.5	-5.47	670	43.2	13012	13954	26966	0.4	93.2	7.3
Kono	Mafindor	5093	5221	10314	0.1	97.5	-2.45	81	127.3	6687	7016	13703	0.2	95.3	-24.7
Kono	Nimikoro	42104	38371	80475	1.1	109.7	9.73	571	140.9	31918	29307	61225	0.9	108.9	31.4
Kono	Nimiyama	22129	20528	42657	0.6	107.8	7.80	365	116.9	14505	13663	28168	0.4	106.2	51.4
Kono	Sandor	47265	47250	94515	1.3	100.0	0.03	1479	63.9	44249	45630	89879	1.3	97.0	5.2
Kono	Soa	20362	20852	41214	0.5	97.7	-2.35	532	77.5	19087	20163	39250	0.6	94.7	5.0
Kono	Tankoro	8747	8521	17268	0.2	102.7	2.65	175	98.7	4333	4168	8501	0.1	104.0	103.1

Table E: - (Cont'd)

District	Chiefdom / Council	2021 CENSUS					Percent Male Excess/Deficit	Land Area (Sq Km)	Population Density (Persons per Sq Km)	2015 CENSUS				Sex Ratio	2015 to 2021 intercensal %Change
		Male	Female	Both Sexes	Percent Share of Total population	Sex Ratio				Male	Female	Both Sexes	Percent Share of Total population		
Kono	Toli	1934	2164	4098	0.1	89.4	-10.63	107	38.3	2410	2636	5046	0.1	91.4	-18.8
Kono	Koidu City	97416	99002	196418	2.6	98.4	-1.60	28	7014.9	63858	64172	128030	1.8	99.5	53.4
Bombali	Biriwa	19870	20917	40787	0.5	95.0	-5.01	897	45.5	22720	24585	47305	0.7	92.4	-13.8
Bombali	Bombali Sebor	15644	16421	32065	0.4	95.3	-4.73	208	154.2	14230	14749	28979	0.4	96.5	10.6
Bombali	Bombali Siari	4099	4721	8820	0.1	86.8	-13.18	55	160.4	3555	3879	7434	0.1	91.6	18.6
Bombali	Gbanti	26084	28211	54295	0.7	92.5	-7.54	77	705.1	20845	21285	42130	0.6	97.9	28.9
Bombali	Gbendembu	8502	8922	17424	0.2	95.3	-4.71	413	42.2	8764	9688	18452	0.3	90.5	-5.6
Bombali	Kamaranka	5696	5797	11493	0.2	98.3	-1.74	125	91.9	5906	5946	11852	0.2	99.3	-3.0
Bombali	Magbaimba Ndorwahun	4777	4915	9692	0.1	97.2	-2.81	335	28.9	6347	6341	12688	0.2	100.1	-23.6
Bombali	Makari	20937	21866	42803	0.6	95.8	-4.25	564	75.9	18953	20262	39215	0.6	93.5	9.1
Bombali	Mara	6000	5795	11795	0.2	103.5	3.54	154	76.6	8551	8900	17451	0.2	96.1	-32.4
Bombali	N'gowahun	9853	11286	21139	0.3	87.3	-12.70	376	56.2	9734	10614	20348	0.3	91.7	3.9
Bombali	Paki Masabong	10773	11641	22414	0.3	92.5	-7.46	267	83.9	9487	10393	19880	0.3	91.3	12.7
Bombali	Safroko Limba	13652	15741	29393	0.4	86.7	-13.27	399	73.7	14683	16573	31256	0.4	88.6	-6.0
Bombali	Makeni City	40937	44179	85116	1.1	92.7	-7.34	14	6079.7	62139	63831	125970	1.8	97.3	-32.4
Falaba	Delemandugu	7819	8370	16189	0.2	93.4	-6.58	515	31.4	10617	10396	21013	0.3	102.1	-23.0
Falaba	Dembelia	5844	5978	11822	0.2	97.8	-2.24	379	31.2	5080	5148	10228	0.1	98.7	15.6
Falaba	Dembelia-Sinkunia	7814	7831	15645	0.2	99.8	-0.22	487	32.1	10879	10570	21449	0.3	102.9	-27.1
Falaba	Folosaba	3385	3165	6550	0.1	107.0	6.95	372	17.6	5370	5321	10691	0.2	100.9	-38.7
Falaba	Kamadu Yiraia	6330	5540	11870	0.2	114.3	14.26	878	13.5	6349	6881	13230	0.2	92.3	-10.3
Falaba	Kebelia	3590	3364	6954	0.1	106.7	6.72	223	31.2	4701	4271	8972	0.1	110.1	-22.5
Falaba	Kulor Saradu	4814	4708	9522	0.1	102.3	2.25	442	21.5	6245	6130	12375	0.2	101.9	-23.1
Falaba	Mongo	5943	5700	11643	0.2	104.3	4.26	676	17.2	7514	8007	15521	0.2	93.8	-25.0
Falaba	Morifindugu	6348	6817	13165	0.2	93.1	-6.88	523	25.2	5422	5880	11302	0.2	92.2	16.5

Table E: (Cont'd)

District	Chiefdom / Council	2021 CENSUS					Percent Male Excess/Deficit	Land Area (Sq Km)	Population Density (Persons per Sq Km)	2015 CENSUS				Sex Ratio	2015 – 2021 intercensal %Change
		Male	Female	Both Sexes	Percent Share of Total population	Sex Ratio				Male	Female	Both Sexes	Percent Share of Total population		
Falaba	Neya	9158	8802	17960	0.2	104.0	4.04	705	25.5	12954	12285	25239	0.4	105.4	-28.8
Falaba	Nyedu	3256	3460	6716	0.1	94.1	-5.90	281	23.9	2542	2548	5090	0.1	99.8	31.9
Falaba	Sulima	11693	11197	22890	0.3	104.4	4.43	1042	22	13985	12682	26667	0.4	110.3	-14.2
Falaba	Wollay Barawa	7628	7651	15279	0.2	99.7	-0.30	933	16.4	12033	11543	23576	0.3	104.2	-35.2
Koinadugu	Diang	16264	16216	32480	0.4	100.3	0.30	1057	30.7	14699	14364	29063	0.4	102.3	11.8
Koinadugu	Gbonkobon Kayaka	3924	4081	8005	0.1	96.2	-3.85	315	25.4	3635	4093	7728	0.1	88.8	3.6
Koinadugu	Kalian	9494	9175	18669	0.2	103.5	3.48	602	31	10796	11471	22267	0.3	94.1	-16.2
Koinadugu	Kamukeh	5224	5540	10764	0.1	94.3	-5.70	365	29.5	6261	5926	12187	0.2	105.7	-11.7
Koinadugu	Kasunko Kakellian	8616	8683	17299	0.2	99.2	-0.77	230	75.2	5119	5705	10824	0.2	89.7	59.8
Koinadugu	Nieni	14435	14901	29336	0.4	96.9	-3.13	776	37.8	15984	16372	32356	0.5	97.6	-9.3
Koinadugu	Sengbe	10794	11301	22095	0.3	95.5	-4.49	307	72	12276	12510	24786	0.3	98.1	-10.9
Koinadugu	Tamiso	3447	3710	7157	0.1	92.9	-7.09	405	17.7	2980	3264	6244	0.1	91.3	14.6
Koinadugu	Wara Wara Bafodia	5896	5770	11666	0.2	102.2	2.18	585	19.9	11059	11360	22419	0.3	97.4	-48.0
Koinadugu	Wara Wara Yagala	24270	24392	48662	0.6	99.5	-0.50	321	151.6	17998	18147	36145	0.5	99.2	34.6
Tonkolili	Dansogoia	12335	12385	24720	0.3	99.6	-0.40	203	121.8	12411	12043	24454	0.3	103.1	1.1
Tonkolili	Gbonkolenkeni/ Masankong	5337	5382	10719	0.1	99.2	-0.84	150	71.5	8337	8753	17090	0.2	95.2	-37.3
Tonkolili	Kafe	5441	4714	10155	0.1	115.4	15.42	213	47.7	4620	4065	8685	0.1	113.7	16.9
Tonkolili	Kalanthuba	4567	4712	9279	0.1	96.9	-3.08	248	37.4	5565	5845	11410	0.2	95.2	-18.7
Tonkolili	Kholifa Mabang	8413	7890	16303	0.2	106.6	6.63	315	51.8	7996	8670	16666	0.2	92.2	-2.2
Tonkolili	Kholifa Mamuntha/ Mayosso	7405	6865	14270	0.2	107.9	7.87	221	64.6	7589	7517	15106	0.2	101.0	-5.5
Tonkolili	Kholifa Rowala	32213	31261	63474	0.8	103.0	3.05	229	277.2	25232	25790	51022	0.7	97.8	24.4

Table E: (Cont'd)

District	Chiefdom / Council	2021 CENSUS					Percent Male Excess/Deficit	Land Area (Sq Km)	Population Density (Persons per Sq Km)	2015 CENSUS				Sex Ratio	2015 – 2021 intercensal %Change
		Male	Female	Both Sexes	Percent Share of Total population	Sex Ratio				Male	Female	Both Sexes	Percent Share of Total population		
Tonkolili	Kunike Barina	11517	10349	21866	0.3	111.3	11.29	415	52.7	13166	12079	25245	0.4	109.0	-13.4
Tonkolili	Kunike Folawusu	11657	10839	22496	0.3	107.5	7.55	400	56.2	11986	11558	23544	0.3	103.7	-4.5
Tonkolili	Kunike Sanda	26632	26692	53324	0.7	99.8	-0.22	398	134	25533	25338	50871	0.7	100.8	4.8
Tonkolili	Malal	5757	6272	12029	0.2	91.8	-8.21	184	65.4	6540	6962	13502	0.2	93.9	-10.9
Tonkolili	Mayeppoh	8988	7893	16881	0.2	113.9	13.87	225	75	9312	9414	18726	0.3	98.9	-9.9
Tonkolili	Poli	3114	2701	5815	0.1	115.3	15.29	123	47.3	3889	4261	8150	0.1	91.3	-28.7
Tonkolili	Sambaya	25443	26298	51741	0.7	96.7	-3.25	714	72.5	15690	16303	31993	0.5	96.2	61.7
Tonkolili	Simiria	13880	12829	26709	0.4	108.2	8.19	343	77.9	13847	14138	27985	0.4	97.9	-4.6
Tonkolili	Tane	23096	21462	44558	0.6	107.6	7.61	446	99.9	16309	16976	33285	0.5	96.1	33.9
Tonkolili	Yele	10768	10559	21327	0.3	102.0	1.98	237	90	11959	11780	23739	0.3	101.5	-10.2
Tonkolili	Yoni Mabanta	18199	18191	36390	0.5	100.0	0.04	519	70.1	15947	17354	33301	0.5	91.9	9.3
Tonkolili	Yoni Mamaila	47365	47836	95201	1.3	99.0	-0.98	715	133.1	38673	40537	79210	1.1	95.4	20.2
Kambia	Bramaia	18839	18293	37132	0.5	103.0	2.98	227	163.6	10947	12118	23065	0.3	90.3	61.0
Kambia	Dixon	4116	4161	8277	0.1	98.9	-1.08	76	108.9	3764	4226	7990	0.1	89.1	3.6
Kambia	Gbinle	9212	9078	18290	0.2	101.5	1.48	113	161.9	7376	8067	15443	0.2	91.4	18.4
Kambia	Khonimaka	9449	9447	18896	0.3	100.0	0.02	315	60	6418	7281	13699	0.2	88.1	37.9
Kambia	Magbema	51352	47638	98990	1.3	107.8	7.80	331	299.1	44339	47826	92165	1.3	92.7	7.4
Kambia	Mambolo	21905	20744	42649	0.6	105.6	5.60	226	188.7	17911	20041	37952	0.5	89.4	12.4
Kambia	Masungbala	9691	9607	19298	0.3	100.9	0.87	172	112.2	7271	8408	15679	0.2	86.5	23.1
Kambia	Munu Thallah	7558	7486	15044	0.2	101.0	0.96	137	109.8	7522	8596	16118	0.2	87.5	-6.7
Kambia	Samu	34832	32777	67609	0.9	106.3	6.27	536	126.1	31004	33786	64790	0.9	91.8	4.4
Kambia	Tonko Limba	21606	19908	41514	0.5	108.5	8.53	892	46.5	28989	29584	58573	0.8	98.0	-29.1
Karene	Buya	7213	7165	14378	0.2	100.7	0.67	170	84.6	6134	7040	13174	0.2	87.1	9.1
Karene	Dibia	11724	12335	24059	0.3	95.0	-4.95	185	130	7252	8267	15519	0.2	87.7	55.0
Karene	Gbanti_Karene	9941	9848	19789	0.3	100.9	0.94	280	70.7	8105	8534	16639	0.2	95.0	18.9

Table E: (Cont'd)

District	Chiefdom / Council	2021 CENSUS					Percent Male Excess/Deficit	Land Area (Sq Km)	Population Density (Persons per Sq Km)	2015 CENSUS				Sex Ratio	2015 – 2021 intercensal %Change
		Male	Female	Both Sexes	Percent Share of Total population	Sex Ratio				Male	Female	Both Sexes	Percent Share of Total population		
Karene	Libeisaygahun/ Gbombahun	6763	6747	13510	0.2	100.2	0.24	302	44.7	5635	6135	11770	0.2	91.9	14.8
Karene	Mafonda Makerembay	3283	3277	6560	0.1	100.2	0.18	117	56.1	2163	2266	4429	0.1	95.5	48.1
Karene	Romende	13988	13872	27860	0.4	100.8	0.84	263	105.9	9949	11158	21107	0.3	89.2	32.0
Karene	Safroko	4481	4677	9158	0.1	95.8	-4.19	109	84	5428	5552	10980	0.2	97.8	-16.6
Karene	Sanda Loko	13222	11640	24862	0.3	113.6	13.59	609	40.8	22274	22801	45075	0.6	97.7	-44.8
Karene	Sanda Magbolontor	13924	13938	27862	0.4	99.9	-0.10	562	49.6	11161	12570	23731	0.3	88.8	17.4
Karene	Sanda Tendaran	15099	14683	29782	0.4	102.8	2.83	358	83.2	13178	13050	26228	0.4	101.0	13.6
Karene	Sella Limba	30024	28042	58066	0.8	107.1	7.07	425	136.6	28497	29904	58401	0.8	95.3	-0.6
Karene	Tambakha Simibungie	5065	4740	9805	0.1	106.9	6.86	571	17.2	7351	6679	14030	0.2	110.1	-30.1
Karene	Tambakha Yobangie	12397	12225	24622	0.3	101.4	1.41	1878	13.1	12117	12346	24463	0.3	98.1	0.6
PortLoko	Bakeh Loko	3056	2715	5771	0.1	112.6	12.56	163	35.4	3722	4051	7773	0.1	91.9	-25.8
PortLoko	Bureh	8115	9439	17554	0.2	86.0	-14.03	133	132	7467	8199	15666	0.2	91.1	12.1
PortLoko	Kaffu Bullom	52485	54917	107402	1.4	95.6	-4.43	172	624.4	59160	61330	120490	1.7	96.5	-10.9
PortLoko	Kamasondo	16993	18042	35035	0.5	94.2	-5.81	476	73.6	14453	15530	29983	0.4	93.1	16.8
PortLoko	Kasseh	5815	5628	11443	0.2	103.3	3.32	172	66.5	6893	7618	14511	0.2	90.5	-21.1
PortLoko	Koya	41253	45290	86543	1.1	91.1	-8.91	1105	78.3	40119	45058	85177	1.2	89.0	1.6
PortLoko	Lokomasama	28911	31357	60268	0.8	92.2	-7.80	441	136.7	22878	25415	48293	0.7	90.0	24.8
PortLoko	Maconteh	5348	5988	11336	0.2	89.3	-10.69	114	99.4	4819	5183	10002	0.1	93.0	13.3
PortLoko	Maforki	18719	20414	39133	0.5	91.7	-8.30	415	94.3	16754	19200	35954	0.5	87.3	8.8
PortLoko	Makama	4260	5079	9339	0.1	83.9	-16.13	92	101.5	4675	4839	9514	0.1	96.6	-1.8
PortLoko	Marampa	27077	30060	57137	0.8	90.1	-9.92	399	143.2	28737	30586	59323	0.8	94.0	-3.7
PortLoko	Masimera	18096	19499	37595	0.5	92.8	-7.20	674	55.8	19324	21519	40843	0.6	89.8	-8.0

Table E: (Cont'd)

District	Chieftdom / Council	2021 CENSUS					Percent Male Excess/Deficit	Land Area (Sq Km)	Population Density (Persons per Sq Km)	2015 CENSUS				Sex Ratio	2015 – 2021 intercensal %Change
		Male	Female	Both Sexes	Percent Share of Total population	Sex Ratio				Male	Female	Both Sexes	Percent Share of Total population		
PortLoko	Thainkatopa	4257	4421	8678	0.1	96.3	-3.71	98	88.6	5089	5210	10299	0.1	97.7	-15.7
PortLoko	Port Loko City	19405	21399	40804	0.5	90.7	-9.32	212	192.5	20940	22097	43037	0.6	94.8	-5.2
Bo	Badjia	5457	5361	10818	0.1	101.8	1.79	193	56.1	3982	4153	8135	0.1	95.9	33.0
Bo	Bagbo	14308	14734	29042	0.4	97.1	-2.89	277	104.8	12803	13081	25884	0.4	97.9	12.2
Bo	Bagbwe (Bagbe)	7848	8128	15976	0.2	96.6	-3.44	233	68.6	10444	10482	20926	0.3	99.6	-23.7
Bo	Boama	27370	28137	55507	0.7	97.3	-2.73	397	139.8	22482	23353	45835	0.6	96.3	21.1
Bo	Bongor	9907	10361	20268	0.3	95.6	-4.38	166	122.1	8111	8194	16305	0.2	99.0	24.3
Bo	Bumpe Ngao	26929	27435	54364	0.7	98.2	-1.84	945	57.5	21718	22561	44279	0.6	96.3	22.8
Bo	Gbo	3098	3288	6386	0.1	94.2	-5.78	186	34.3	2676	2727	5403	0.1	98.1	18.2
Bo	Jaiama	10940	11432	22372	0.3	95.7	-4.30	276	81.1	7088	7905	14993	0.2	89.7	49.2
Bo	Kakua	46143	50515	96658	1.3	91.3	-8.65	334	289.4	24377	26697	51074	0.7	91.3	89.3
Bo	Komboya	8587	8916	17503	0.2	96.3	-3.69	248	70.6	7692	7931	15623	0.2	97.0	12.0
Bo	Lugbu	18611	18546	37157	0.5	100.4	0.35	257	144.6	12509	12944	25453	0.4	96.6	46.0
Bo	Niawa Lenga	8177	8191	16368	0.2	99.8	-0.17	242	67.6	6789	7166	13955	0.2	94.7	17.3
Bo	Selenga	3087	3432	6519	0.1	89.9	-10.05	97	67.2	4368	4807	9175	0.1	90.9	-28.9
Bo	Tikonko	45194	46880	92074	1.2	96.4	-3.60	507	181.6	26116	27090	53206	0.8	96.4	73.1
Bo	Valunia	18685	18315	37000	0.5	102.0	2.02	821	45.1	18177	17381	35558	0.5	104.6	4.1
Bo	Wonde	7551	8337	15888	0.2	90.6	-9.43	268	59.3	7239	8066	15305	0.2	89.7	3.8
Bo	Bo City	104454	118621	223075	3.0	88.1	-11.94	25	8923	83998	90371	174369	2.5	92.9	27.9
Bonthe	Bendu-Cha	3586	3315	6901	0.1	108.2	8.17	235	29.4	3500	3668	7168	0.1	95.4	-3.7
Bonthe	Bum	17393	17400	34793	0.5	100.0	-0.04	351	99.1	11841	12498	24339	0.3	94.7	43.0
Bonthe	Dema	7359	6887	14246	0.2	106.9	6.85	75	189.9	3749	3662	7411	0.1	102.4	92.2
Bonthe	Imperri	28163	27265	55428	0.7	103.3	3.29	619	89.5	17019	16375	33394	0.5	103.9	66.0
Bonthe	Jong	28907	29358	58265	0.8	98.5	-1.54	387	150.6	16511	17305	33816	0.5	95.4	72.3
Bonthe	Kpanda Kemo	7347	7227	14574	0.2	101.7	1.66	164	88.9	5057	5381	10438	0.1	94.0	39.6

Table E: (Cont'd)

District	Chiefdom / Council	2021 CENSUS					Percent Male Excess/Deficit	Land Area (Sq Km)	Population Density (Persons per Sq Km)	2015 CENSUS				Sex Ratio	2015 – 2021 intercensal %Change
		Male	Female	Both Sexes	Percent Share of Total population	Sex Ratio				Male	Female	Both Sexes	Percent Share of Total population		
Bonthe	Kwamebai Krim	7452	7296	14748	0.2	102.1	2.14	290	50.9	6975	7314	14289	0.2	95.4	3.2
Bonthe	Nongoba Bullom	14744	13834	28578	0.4	106.6	6.58	551	51.9	10009	10051	20060	0.3	99.6	42.5
Bonthe	Sittia	15344	15573	30917	0.4	98.5	-1.47	558	55.4	10522	10825	21347	0.3	97.2	44.8
Bonthe	Sogbeni	8313	8651	16964	0.2	96.1	-3.91	153	110.9	5236	5627	10863	0.2	93.1	56.2
Bonthe	Yawbeko	4982	4789	9771	0.1	104.0	4.03	194	50.4	3670	3911	7581	0.1	93.8	28.9
Bonthe	Bonthe Urban	5965	6411	12376	0.2	93.0	-6.96	13	952	4925	5150	10075	0.1	95.6	22.8
Moyamba	Bagruwa	14101	14210	28311	0.4	99.2	-0.77	826	34.3	13705	13918	27623	0.4	98.5	2.5
Moyamba	Bumpeh	18479	20261	38740	0.5	91.2	-8.80	714	54.3	17826	19619	37445	0.5	90.9	3.5
Moyamba	Dasse	6700	6751	13451	0.2	99.2	-0.76	349	38.5	6369	6848	13217	0.2	93.0	1.8
Moyamba	Fakunya	12732	14216	26948	0.4	89.6	-10.44	511	52.7	13133	14513	27646	0.4	90.5	-2.5
Moyamba	Kagboro	19154	20187	39341	0.5	94.9	-5.12	704	55.9	16811	18051	34862	0.5	93.1	12.8
Moyamba	Kaiyamba	13438	15198	28636	0.4	88.4	-11.58	475	60.3	12240	13509	25749	0.4	90.6	11.2
Moyamba	Kamajei	5431	5858	11289	0.1	92.7	-7.29	461	24.5	4934	5231	10165	0.1	94.3	11.1
Moyamba	Kongbora	5706	6160	11866	0.2	92.6	-7.37	375	31.6	4979	5349	10328	0.1	93.1	14.9
Moyamba	Kori	16493	17402	33895	0.4	94.8	-5.22	664	51	14797	15717	30514	0.4	94.1	11.1
Moyamba	Kowa	4876	5331	10207	0.1	91.5	-8.53	219	46.6	4642	5110	9752	0.1	90.8	4.7
Moyamba	Lower Banta	21911	23926	45837	0.6	91.6	-8.42	498	92	18129	19188	37317	0.5	94.5	22.8
Moyamba	Ribbi	15799	16891	32690	0.4	93.5	-6.46	641	51	15730	17435	33165	0.5	90.2	-1.4
Moyamba	Timdale	6923	6545	13468	0.2	105.8	5.78	339	39.7	5155	5137	10292	0.1	100.4	30.9
Moyamba	Upper Banta	6093	5999	12092	0.2	101.6	1.57	195	62	5249	5264	10513	0.1	99.7	15.0
Pujehun	Barri	25327	25415	50742	0.7	99.7	-0.35	494	102.7	17697	19208	36905	0.5	92.1	37.5
Pujehun	Galliness	10328	10558	20886	0.3	97.8	-2.18	233	89.6	11527	11783	23310	0.3	97.8	-10.4
Pujehun	Kabonde	2897	2988	5885	0.1	97.0	-3.05	42	140.1	1766	1803	3569	0.1	97.9	64.9
Pujehun	Kpaka	8632	8989	17621	0.2	96.0	-3.97	297	59.3	7721	8747	16468	0.2	88.3	7.0
Pujehun	Makpele	31228	30385	61613	0.8	102.8	2.77	402	153.3	15425	15655	31080	0.4	98.5	98.2

Table E: (Cont'd)

District	Chiefdom / Council	2021 CENSUS					Percent Male Excess/Deficit	Land Area (Sq Km)	Population Density (Persons per Sq Km)	2015 CENSUS				Sex Ratio	2015 – 2021 intercensal %Change
		Male	Female	Both Sexes	Percent Share of Total population	Sex Ratio				Male	Female	Both Sexes	Percent Share of Total population		
Pujehun	Malen	21394	21260	42654	0.6	100.6	0.63	275	155.1	25164	24099	49263	0.7	104.4	-13.4
Pujehun	Mono Sakrim	7537	7536	15073	0.2	100.0	0.01	265	56.9	6084	6809	12893	0.2	89.4	16.9
Pujehun	Panga	21895	22430	44325	0.6	97.6	-2.39	448	98.9	22142	23629	45771	0.6	93.7	-3.2
Pujehun	Panga Krim	3349	3388	6737	0.1	98.8	-1.15	78	86.4	4296	4673	8969	0.1	91.9	-24.9
Pujehun	Pejeh (Futa Peje)	7886	7738	15624	0.2	101.9	1.91	134	116.6	6576	7024	13600	0.2	93.6	14.9
Pujehun	Perri	14146	14494	28640	0.4	97.6	-2.40	368	77.8	15186	16195	31381	0.4	93.8	-8.7
Pujehun	Soro Gbema	39254	37680	76934	1.0	104.2	4.18	733	105	20291	22001	42292	0.6	92.2	81.9
Pujehun	Sowa	13707	13601	27308	0.4	100.8	0.78	234	116.7	8428	8708	17136	0.2	96.8	59.4
Pujehun	Yakemu Kpukumu	7752	7780	15532	0.2	99.6	-0.36	189	82.2	6566	7258	13824	0.2	90.5	12.4
West Rural	Koya Rural	60330	65536	125866	1.7	92.1	-7.94	171	736.1	34381	36042	70423	1.0	95.4	78.7
West Rural	Mountain Rural	22104	29785	51889	0.7	74.2	-25.79	38	1365.5	16014	14474	30488	0.4	110.6	70.2
West Rural	Waterloo Rural	157742	156640	314382	4.2	100.7	0.70	163	1928.7	104978	108800	213778	3.0	96.5	47.1
West Rural	York Rural	81882	88137	170019	2.3	92.9	-7.10	241	705.5	65978	63603	129581	1.8	103.7	31.2
West Urban	Central I	13510	17297	30807	0.4	78.1	-21.89	2	15403.5	32023	30476	62499	0.9	105.1	-50.7
West Urban	Central II	4656	5287	9943	0.1	88.1	-11.93	1	9943	11623	9790	21413	0.3	118.7	-53.6
West Urban	East I	13676	16891	30567	0.4	81.0	-19.03	2	15283.5	30380	30864	61244	0.9	98.4	-50.1
West Urban	East II	19075	23126	42201	0.6	82.5	-17.52	2	21100.5	45336	44194	89530	1.3	102.6	-52.9
West Urban	East III	135928	150270	286198	3.8	90.5	-9.54	46	6221.7	222544	226028	448572	6.3	98.5	-36.2
West Urban	West I	13648	13596	27244	0.4	100.4	0.38	2	13622	26564	27417	53981	0.8	96.9	-49.5
West Urban	West II	34064	34249	68313	0.9	99.5	-0.54	7	9759	64657	65492	130149	1.8	98.7	-47.5
West Urban	West III	57854	56047	113901	1.5	103.2	3.22	21	5423.9	95080	93496	188576	2.7	101.7	-39.6
SIERRA LEONE	SIERRA LEONE	3727747	3820955	7548702	100	97.6	-2.4	72783	103.7	3490978	3601135	7092113	100	96.9	6.4